

SAYLOR PARK

-PLAN 2021-





Centered on the philosophy that the success of the school and the success of the neighborhood are inextricably linked, the **Community Learning Center Institute (CLCI)** leads the ongoing engagement in the Greater Cincinnati Region in the development of all schools as community learning centers, with the mission to optimize the conditions for learning and catalyze the revitalization of the neighborhood.

<http://www.clcinstitute.org/>



APPROVED BY

Sayler Park Village Council | 10.07.2019

City of Cincinnati Planning Commission | 10.15.2021

City of Cincinnati City Council | 12.08.2021



Sayler Park Village Council
P.O. Box 33178
Cincinnati, Ohio 45233

October 7, 2019

Sayler Park is a place where people find reasons to come together. Holiday celebrations with friends old and new, events supporting our schools, festivals in our parks, worship and celebration in our churches – these gatherings are the things that make our neighborhood a true community. So it seems fitting that we’ve come together once again to recognize and celebrate Sayler Park for all that is, and to plan for our future together.

The plans outlined in this booklet represent hours of hard work on the part of many dedicated community members. All who participated have offered their knowledge, passion, time, and talents to planning a future for Sayler Park that is worth looking forward to. This planning process has informed committed teams who are continuing the work of caring for and enhancing our beloved neighborhood.

The process of creating this plan has been a unique experience for our neighbors, but the continued teamwork that will see it through is a long-standing tradition in Sayler Park. Together, we’ll create change that honors Sayler Park’s history and improves life for those who choose to call this great place home. Thank you for joining us on this journey.

Sincerely,


Jackie Litchfield-Apted
Sayler Park Village Council President
SP Plan Steering Committee Member



Jen Langdon
Sayler Park Village Council Vice President
SP Plan Steering Committee Member


Ellen Gerard, Chair
SP Plan Steering Committee Chair


Donna Holtman
SP Plan Steering Committee Member


Mike Johnson
SP Plan Steering Committee Member


Sharon Sellet
SP Plan Steering Committee Member


Sienna Condy
SP Plan Steering Committee Member


Tammy Johnson
SP Plan Steering Committee Member

PARTICIPANTS

Aielli, Maria
Alejo, Emily
Allia, Kim
Ayers, Megan
Bacon, Justin
Barrios, Kendys
Bennett, Mandi
Bill, Christopher
Bill, Jan
Bill, Stephen
Boeing, Curtis
Bolton, Eve
Breitenstein, Susan
Brooks, Vera
Bucher, Clare
Bucher, Jack
Byrd, Tara
Carter, Tanya
Cave, Cindy
Cipriani, Renee
Civitello, Sharon
Coddington, Linda
Colarossi, Jane
Colarossi, Jeff
Condy, Barrett
Condy, Sienna
Cornell, Matthew
Cushing, Robert
Dans, Maggie
Dickman, Leah

Doering, Jeff
Dornette, Bud
Dornette, Mary
Douglas, Annette
Dunatov, Marija
Durepo, Angela
Eckert, Betsy
Eiding, Bev
Eisenpress, Kate
Farwig, Angela
Fatora, Julie
Fields, Brian
Flick, Amanda
Gardocki, John
Garofalo, Lisa
Gauslin, Tricia
Gelwicks, Judy
Gerard, Ellen
Gerard, Garrett
Gibson, Jeff
Gilmore, Chris
Gratsch, Amanda
Grigsby, Nancy
Hais, Chip
Hais, Emily
Hall, Adelyn
Harmeyer, Donna
Harmeyer, Ken
Harris, Jalisa
Hart, Dan

Havlin, Rosalyn
Hensley, Regina
Higgins
Hill, Jennifer
Hillgrove, Jeff
Hockemeyer, Sandy
Hodges, Nancy
Holtman, Donna
Hopkins, Kern
Johnson, Anthony
Johnson, Michael
Jones, Aaron
Kamine, Darlene
Kamuf, Betty
Kay, Denise
Kellam, Caroline
Kellar, Bobbie
Kelly, Martha
Kerby, Ann Marie
Koch, Janet
Kramer, Joyce
Kroeger, Beverly
Kroeger, Kristina
LaGrange, Helen
Lally, Ann
Lambing, Joe
Lambing, Kim
Lammers, Amanda
Lang, Gregory
Langdon, Jen

Langdon, Lance
Lemker, Richard
Litchfield-Apted Jackie
Logel, Jeff
Lorrin
Maloney, Andrew
Maloney, Lynne
Maloney, Holly
Maloney, Tom
Martella, John
Mason, Michelle
Mason, Rob
McAsham, Adam
McAsham, Sara
McCoy, Christen
McKinney, Rhonda
Miller, Kim
Morgan, Chuck
Morgan, Jamie
Mouch, Anna
Neil, Jeanette
Neil, Jim
Neil, Kim
Newcomer, Tammy
Newell, Beth
Newman, Hale
Newman, Mary
Nie, Mary
Ogawa, Brian
Parento, Jennifer

Paxton, Ryan
Pene, Humberto
Perkins, Mary
Pickerel, David
Porter, Molly
Price, Kate
Rawlings, Julie
Ridder, Kathy
Roberts, Claud
Roell, Abri
Rosebrook, Joy
Rozier, Candy
Runyun, Daishia
Sauger, Katherine
Saylor, Laura
Schember, Elizabeth
Shuckman, Steve
Scudder, Leesa
Sellet, Sharon
Shad, Matthew
Sidwell, Lauren
Sittenfeld, P.G.
Smith, Jim
Sohn, Alexander
Sowers, Jamie
Squires, Susan
Stine, Jeff
Strickley, Amanda
Szakhowski, Kristin
Thacker, Chris

Tomeo, Eric
Tomeo, Tiffany
Tonne, David
Waddle, Ranee
Waldeck, Jenny
Waldeck, Matt
Wells, Meredith
Wells, Tom
Welsh, Larry
Welsh, Vicki
Wessels, Michele
Williams, Aaron
Williams, Amy
Williams, Darlene
Williams, Kathy
Woods, Dan
Yakutis, Edith
Yakutis, Leo
Yunker, John

MAYOR OF CINCINNATI

John Cranley

CINCINNATI CITY COUNCIL

Christopher Smitherman, Vice Mayor

Chris Seelbach, President Pro Tem

Greg Landsman

David Mann

Betsy Sundermann

Jan-Michele Lemon Kearney

Steve Goodin

Wendell Young

Liz Keating

CITY MANAGER'S OFFICE

Paula Boggs Muething, City Manager

Chris Bigham, Assistant City Manager

John Juech, Assistance City Manager

Sheryl Long, Assistant City Manager

William Weber, Assistant City Manager

CITY PLANNING COMMISSION

Byron Stallworth, Chair

John Eby, Vice-Chair

City Manager Paula Boggs Muething

Vice Mayor Christopher Smitherman

Jacob Samad

Anne Sesler

Olivia McKinney

CITY STAFF

Katherine Keough-Jurs, Director, Department of City Planning

Alex Peppers, Supervising City Planner, Department of City Planning

Caroline Kellam, Project Manager, Department of City Planning

Beth Johnson, Urban Conservator, Department of Buildings & Inspections

Jeff Stine, Senior Architect, Department of Transportation & Engineering

Matthew Shad, Division Manager, Department of Buildings & Inspections

Aaron Jones, Captain, Cincinnati Police Department

Ann Lally, Sergeant, Cincinnati Police Department

Steven Schuckman, Division Manager, Cincinnati Parks

Daniel Betts, Director, Cincinnati Recreation Commission

SAYLER PARK PLAN STEERING COMMITTEE

Sharon Sellet, SP Connects Transportation & Pedestrian Safety

Tammy Johnson, SP Conserves Green & Public Safety

Ellen Gerard, SP Grows Business & Economic Development

Sienna Condy, SP Learns Education & Youth

Jackie Litchfield-Apted, SP Preserves Historic Preservation

Donna Holtman, SP Promotes Communications & Marketing

Mike Johnson, SP Provides Housing & Aging in Place

Lori Dierig, SP Secures Safety & Nuisance Abatement

SAYLER PARK PARTNERS & STAKEHOLDERS

Cincinnati Neighborhood Business Districts United

Cincinnati Public Schools

Cincinnati Recreation Commission

City of Cincinnati Chief Advocacy Officer for Aging & Accessibility

City of Cincinnati Council Members & Staff

City of Cincinnati Department of Buildings & Inspections

City of Cincinnati Department of City Planning

City of Cincinnati Department of Community & Economic Development

City of Cincinnati Department of Law

City of Cincinnati Department of Public Services

City of Cincinnati Department of Transportation & Engineering

City of Cincinnati Fire Department

City of Cincinnati Police Department

Community Learning Center Institute

Greater Cincinnati Water Works

Mercy School Based Health Center

Mount St. Joseph University

The Port

River-West

Sayler Park Businesses

Sayler Park Community Learning Center

Sayler Park Historical Society

Sayer Park Plan Implementation Teams

Sayler Park Plan Steering Committee

Sayler Park Residents

Sayler Park Village Council

Sayler Park Village Council Business District Committee

University of Cincinnati School of Planning



I. EXECUTIVE SUMMARY

A. OVERVIEW.....1

II. CONTEXT

A. HISTORY & RELATED PLANS.....3
B. CURRENT CONDITIONS.....6
C. CURRENT ZONING + FUTURE LAND USE.....7

III. COMMUNITY ENGAGEMENT

A. OVERVIEW OF PROCESS.....9
B. MAPPING RESULTS.....11
C. VISION.....13

IV. ACTION PLAN

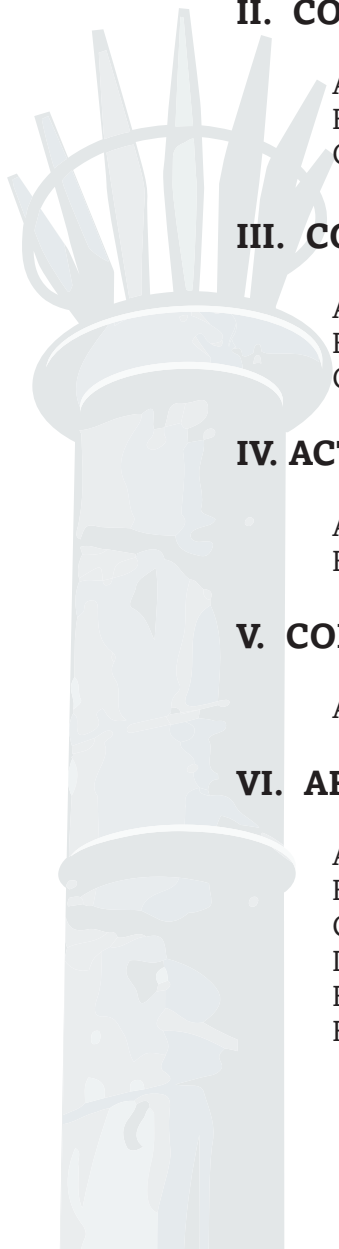
A. INITIATIVES, GOALS & STRATEGIES.....15
B. NEIGHBORHOOD PRIORITIES & TIME LINE.....39

V. CONCLUSION

A. NEXT STEPS.....47

VI. APPENDIX

A. COMMUNITY ENGAGEMENT EXERCISE.....48
B. SP PLAN INITIATIVES 1-PAGERS.....49
C. SP CONSERVES GREEN RESOURCE MATERIALS.....57
D. SP VACANT PROPERTIES MAP.....58
E. SP HILLSIDE RECREATION FIELDS PROPOSAL.....59
F. SP COMMUNITY FOOD & ASSETS.....66



OVERVIEW

Annexed by the City of Cincinnati in 1911, the historic riverfront community of Sayler Park is embarking on its first ever neighborhood plan. The following chapters provide context for Sayler Park, as well as an overview of the community engagement process undertaken for this Plan. This deep-dive process, which started in May of 2017 and engaged over 168 residents, business owners, local leaders and city-wide stakeholders, as well as all students and staff at Sayler Park School, resulted in the 8 key initiative areas shown below. These initiatives provide a clear vision for the future of the neighborhood, as well as lay the foundation for the goals and strategies enumerated in later chapters. Acting as a blueprint for future development, the Sayler Park Plan has already resulted in an estimated \$1.5 Million in committed investment and anticipates Sayler Park to be an attractive, premier riverfront neighborhood for years to come.



SAYLER PARK CONNECTS: TRAFFIC + PEDESTRIAN SAFETY

Sayler Park strives to be an accessible and pedestrian-oriented neighborhood that connects people through a safe and maintainable multi-modal transportation system by embracing innovative technologies and designing with the end-user in mind.



SAYLER PARK CONSERVES: GREEN + PUBLIC SPACES

Sayler Park is a recognized leader and ambassador of green living for the region, which fosters community-driven stewardship through the promotion and implementation of earth-first practices.



SAYLER PARK GROWS: BUSINESS + ECONOMIC DEVELOPMENT

Sayler Park hosts a vital family-oriented marketplace that helps the neighborhood thrive and grow.



SAYLER PARK LEARNS: EDUCATION + YOUTH

Sayler Park is an educated community that values life-long learning, resulting in empowered and engaged citizens that invest back into the community, utilizing Sayler Park Community Learning Center as its hub.



SAYLER PARK PRESERVES: HISTORIC PRESERVATION

Sayler Park is a celebrated neighborhood through thoughtful preservation of its rich assets, architecture and history.



SAYLER PARK PROMOTES: COMMUNICATIONS + MARKETING

Sayler Park is a recognized neighborhood with a cohesive communications strategy that incorporates a strong neighborhood brand.



SAYLER PARK PROVIDES: HOUSING + AGING IN PLACE

Sayler Park is a great place to live for all ages.



SAYLER PARK SECURES: SAFETY + NUISANCE ABATEMENT

Sayler Park is a safe neighborhood with proactive, vigilant and caring residents.

HISTORY + RELEVANT PLANS

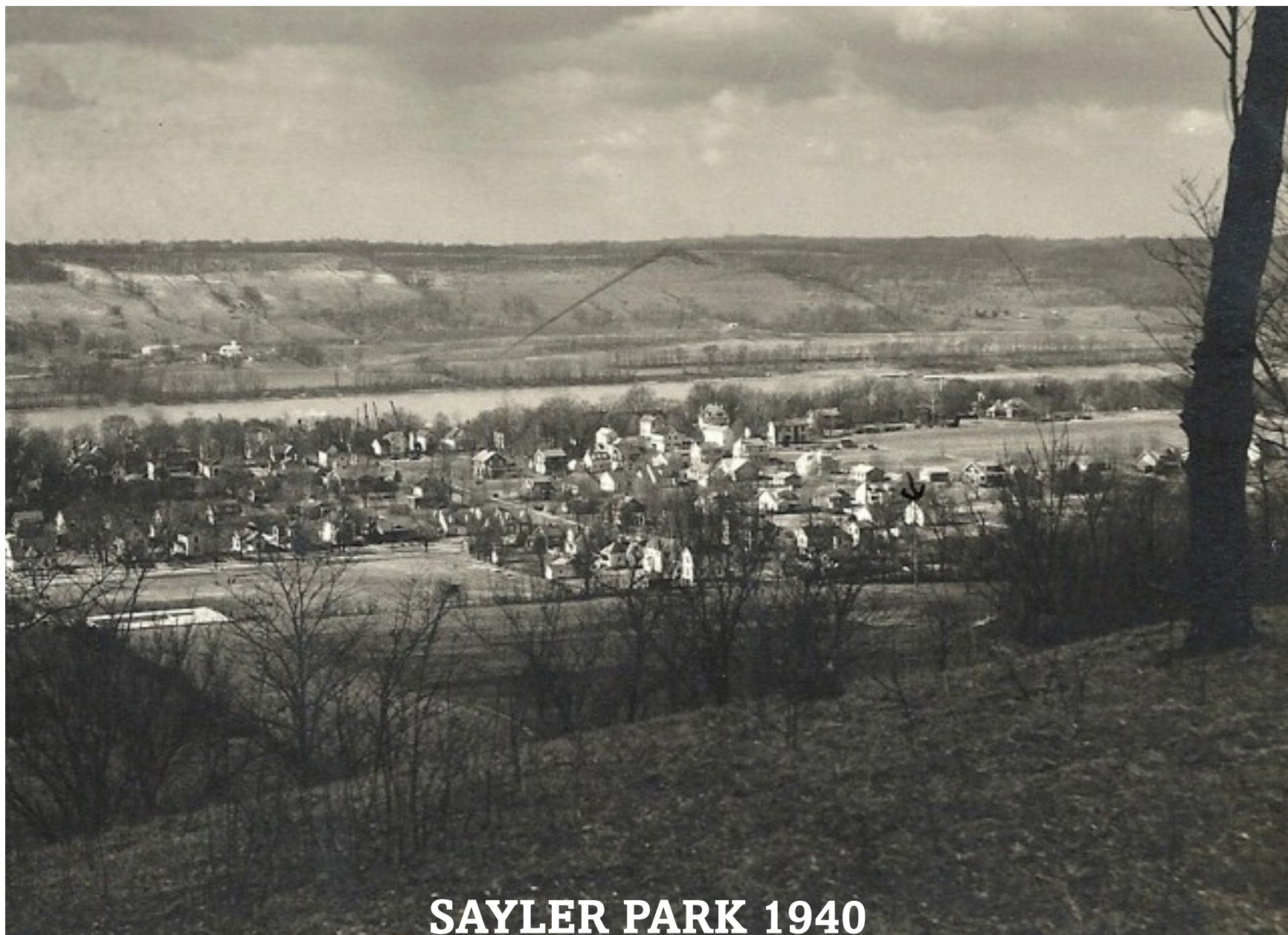
In 1794, Daniel Gano arrived to where we now refer as Saylor Park, Cincinnati, Ohio. Since his arrival centuries ago, the neighborhood has built a tremendous reputation for being resilient, dedicated to preserving its history, environment and community. From its ancient Native American burial grounds and architecture to its expansive greenspace and parklands, Saylor Park is a gem in Cincinnati's boundaries. Nelson Saylor, the first mayor of what was then called Home City, fought to keep the town green and is accredited for saving the 140-year-old Sycamore tree located in the center of Nelson Saylor Park in the neighborhood's business district.

During this same time period, Joshua Carter - a renowned architect and business owner - built the historic Parkland Theater, as well as several historical homes still prominent in the neighborhood and the town's train station. The Theater, the oldest in the City of Cincinnati, once housed a bank, venue space, ice cream parlor, tavern and apartments. Renovated in 2012, it now is the central movie theater for the neighborhood and much of the west side.

In 1911, townships Fernbank, Home City and Delhi were annexed and Saylor Park officially became part of the City of Cincinnati. Abutting the Ohio River on the West side of the City, Saylor Park, holding deep roots in the riverfront and industry, embraced the building of Nokomis Avenue (now River Road) in 1955. During this same time period, Home City Ice, Kroger and several other businesses would call Saylor Park home.

While the neighborhood was experiencing great development, it was not without challenges, particularly unfortunate weather events. In 1937, Saylor Park experienced a tremendous flood that damaged several properties throughout the neighborhood. In 1947, the Hillside Bridge collapsed. A few decades later, Saylor Park was hit by the notorious 1974 tornado, which destroyed 69 houses, damaged over 100 properties and killed approximated 700 trees. The rebuilding of the neighborhood resulted in adding several modern, dense apartment complexes, changing the historic fabric of the neighborhood in certain areas.

Turning to the 21st Century, Saylor Park, unlike many other Cincinnati neighborhood's, has been able to hold onto its middle-class. With the renovation of Saylor Park School into Saylor Park Community Learning Center, the neighborhood has seen the addition of the Mercy Health Center and other vital neighborhood resources. Several of its parks have been renovated and Fernbank Park is an asset that attracts people from all over the region. New homes and businesses have been built and the neighborhood is experiencing a steady growth in population, particular of families with young children. With much to celebrate, it is clear that the community of Saylor Park has a rich history and an even brighter future.



SAYLER PARK 1940

RELATED PLANS

In Sayler Park's 225 year history, it has never been through a formal neighborhood planning process. Embracing the opportunity and challenge, Sayler Park's residents and local leaders embarked on this journey starting in Spring of 2017. Utilizing the Community Learning Center Institute and the City of Cincinnati Department of City Planning as facilitators, the community has worked diligently for over three years to engage its residents, business owners, local leaders and stakeholders in the creation of this document. Relying heavily on Plan Cincinnati adopted in 2012 as its guide, this process has helped galvanize the community towards a singular vision and the Sayler Park Plan serves as a blueprint for future development.

COMPETE

Foster a climate conducive to growth, investment, stability, and opportunity.

CONNECT

Develop an efficient multi-modal transportation system that supports neighborhood vitality.

LIVE

Build a robust public life.
Create a more livable community.

SUSTAIN

Become a healthier Cincinnati.
Preserve our natural and built environment.

COLLABORATE

Work in synergy with the Cincinnati community.

PLAN CINCINNATI ALIGNMENT

PLAN CINCINNATI

a comprehensive plan for the future

Adopted by Cincinnati City Council
November 21, 2012



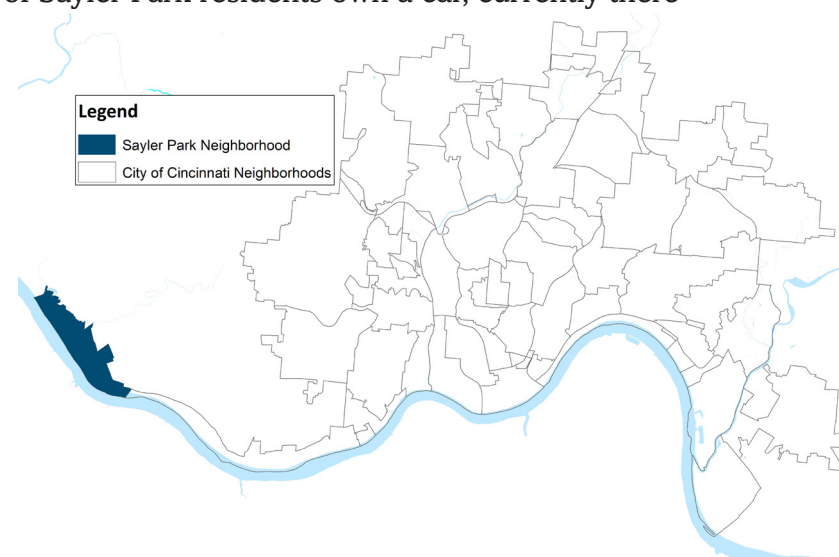
CURRENT CONDITIONS

The neighborhood of Sayler Park is working to retain its middle class and build upon its many assets. A unique riverfront retreat described by residents as family-oriented, safe, beautiful and quiet, Sayler Park sees promising trends when looking at Census Data. While Sayler Park's **population** declined by 468 people from 2000 to 2010, totaling **2,765** people, it has since stabilized and increased according to American Community Survey data released in 2019. Looking to age, in 2010 **36%** of Sayler Park's population was **over the age of 50**. Due to recent developments and neighborhood promotion, young families are starting to move into the neighborhood.

Continuing on, Sayler Park has one of the highest **homeownership** rates in the City, reported by the Census in 2010 to be **68%**. This is five percentage points above the national average and almost thirty percentage points above the City of Cincinnati's average. **Home values** continue to rise, averaging **\$109,900** in 2010, and its **vacancy** rate has held relatively low at **13%**.

Employment data shows that Sayler Park residents' incomes are rising, with its **median household income** well above Cincinnati's average at **\$56,745**. Furthermore, the neighborhood's poverty rate is one of Cincinnati's **lowest**, reported to be **8.5%** in 2010. It thus follows that the majority of the population has a high school diploma and higher education experience, with this number continuing to increase each year. Sayler Park Community Learning Center, the neighborhood's local public school, has also experience an increase in enrollment since 2012. Furthermore, it consistently outperforms Cincinnati Public Schools overall.

Finally, the City of Cincinnati reports Sayler Park to be an incredibly safe neighborhood, making up only 0.4% of reported incidents in the City. The only area of concern is **vehicle access**. While **88%** of Sayler Park residents own a car, currently there is only one metro route that runs through the neighborhood, making it incredibly hard for those without a vehicle to access other necessary locations. Because of Sayler Park's remote location, public transportation enhancements should be addressed, particularly as the population ages.

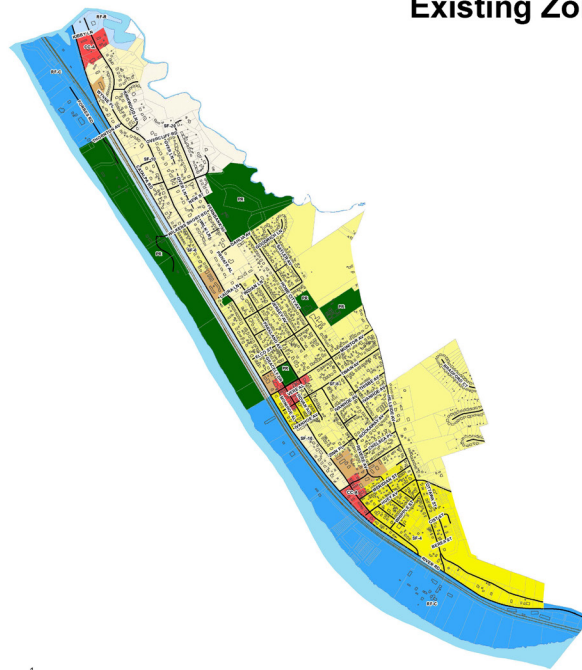


CURRENT ZONING + FUTURE LANDUSE

Sayler Park has a strong desire to retain its sense of place through the continuation of single family residential and low density commercial development that promotes walkability, pedestrian safety, recreation, and growth of local businesses. Sayler Park values its small-town feel and takes pride in having a close sense of community. It is recommended that future zoning decisions be guided by the desire for low density, neighborhood centric, development. See below maps displaying Sayler Park’s existing zoning code, as well as its existing landuse. See the following page for existing zoning definitions.

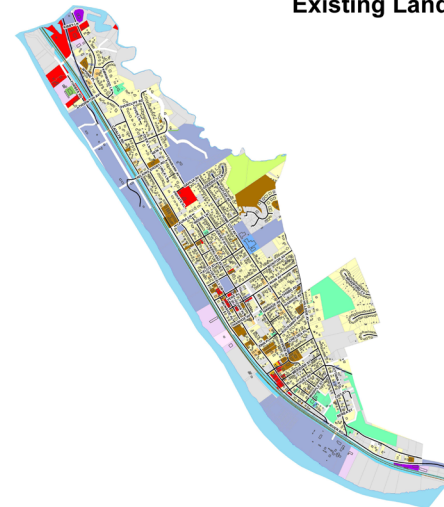
Existing Zoning: Sayler Park

- Legend**
- Buildings
 - Parcels
 - Railroads
 - SF-20: Single Family - 20,000 SF lots
 - SF-10: Single Family - 10,000 SF lots
 - SF-6: Single Family - 6,000 SF lots
 - SF-4: Single Family - 4,000 SF lots
 - RM-2.0: Residential Multi-family - 2,000 SF of land per unit
 - CC-M: Commercial Community - Mixed
 - CC-A: Commercial Community - Auto-oriented
 - RF-R: Riverfront Residential
 - RF-C: Riverfront Commercial
 - PR: Park and Recreational



Existing Land Use: Sayler Park

- Legend**
- Buildings
 - Parcels
 - Railroads
- Land Use**
- Agriculture
 - Commercial
 - Condos
 - Congregate Housing
 - Education
 - Government Services
 - Heavy Industry
 - Institutional
 - Light Industry
 - Miscellaneous
 - NA
 - Office
 - Parks & Recreation
 - Public Services
 - Public Utilities
 - Regional Hwy
 - Single Family
 - Town Family
 - Multi-Family
 - Transportation
 - Unassigned
 - Vacant



SF-20: Allows large-lot single-family housing at very low densities found in suburban residential districts. The minimum lot size is 20,000 square feet.

SF-10: Allows single-family housing at low densities. The minimum lot size is 10,000 square feet.

SF-6: Allows medium-density, single-family housing. The minimum lot size is 6,000 square feet.

SF-4: Allows moderately high density single-family housing. The minimum lot size is 4,000 square feet.

RM-2.0: Intended to provide for a medium density mix of residential housing predominantly duplexes and multi-family on lots that have already been platted. The scale of buildings is generally similar to a large single-family home on a small lot. Where land is assembled, the same scale should be maintained. The minimum land area for every dwelling unit is 2,000 square feet.

CC-M: Intended to provide for a mix of the pedestrian and auto-oriented development. Older, pedestrian-oriented buildings may be intermixed with newer, auto-oriented uses.

CC-A: Intended for areas that provide for easy automobile access. Large buildings are located on the site with parking in front. Lots associated with shopping centers often contain auto-oriented businesses. Performance standards are intended to mitigate the impact of the parking lots and buffer adjacent residential areas.

RF-R: Optimizes the scenic beauty of the riverfront while mixing residential uses into current public and semi-public land uses and to enhance the stability and revitalization of adjoining neighborhoods.

RF-C: Provides sites for commercial and manufacturing uses that require river access, as well as provides a buffer between the high intensity RF-M riverfront industrial and the more mixed-use RF-R areas. Intended to provide needed services for both areas while protecting adjoining residential neighborhoods, public parks and recreation facilities from the effects of more intense commercial and industrial uses.

PR: Preserves, protects and enhances a system of public parks, parkways, greenspace, recreation areas, natural and scenic areas, and protects sensitive natural resource areas.

THE PROCESS



Bringing together neighborhood residents, business owners, various stakeholders, Sayler Park students, staff and partners, the Sayler Park planning process began in Spring of 2017. Structured as a series of engagement workshops focused on asset based planning, the community gathered together under Sayler Park Community Learning Center’s roof to express their hopes and dreams, while formulating their vision for the future of the neighborhood. Over a series of formal and informal meetings, an estimated 168 people participated in the creation of this Plan.

Using inquiry based mapping, Sayler Park’s vision was further clarified by identifying assets, places frequently visited, places avoided, and where there is opportunity for further development. From there, the community prioritized initiatives, goals and implementation strategies that aim to build upon the neighborhood’s many existing strengths. After initiatives and goals were identified, implementation teams were set up to put the plan into action. These implementation teams work under the Sayler Park Plan Steering Committee, pushing forward strategies outlined in future chapters of this Plan. Overall, these implementation teams have been key to the Plan’s success, as not only have they kept momentum among participants by regularly sharing updates and wins, this strategy also allows for continued engagement and feedback as the Plan progresses.

The following pages describe the engagement process, as well as the community’s vision, initiatives and goals in detail. From there, implementation strategies aligned to neighborhood feedback are explored.

At the first kickoff meeting, participants were introduced to the purpose of the planning process and the history of the neighborhood. Current demographic trends and other relevant information were shared, such as employment and housing statistics. After reviewing baseline information, residents engaged in an inquiry based mapping activity, the exercise of which can be found in the appendix of this Plan. Breaking the room into several groups, each with a large map of Sayler Park, the facilitator guided the room into answering four key questions:

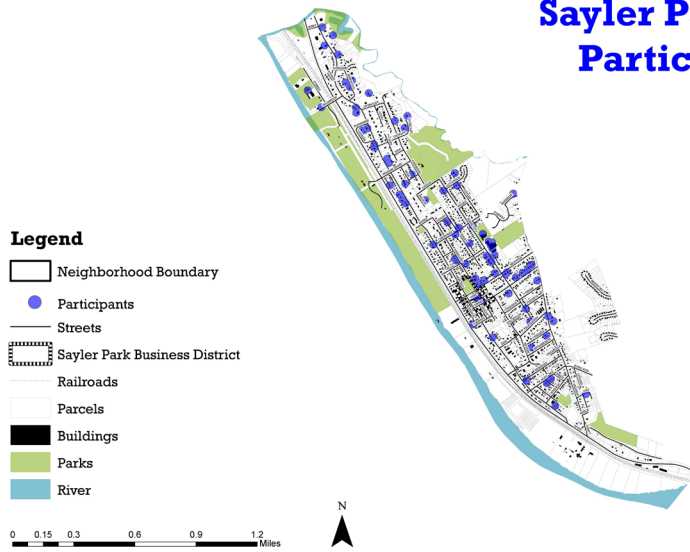
1. Where in Sayler Park do you work and/or live?
2. What places in Sayler Park do you visit often?
3. What places in Sayler Park do you avoid visiting? and,
4. Where in Sayler Park do you see opportunities for future development?

The purpose of this activity was to gather as much initial feedback as possible from participants in order to begin to formulate the neighborhood's vision, initiatives, goals and priorities.

After gathering all the maps and digitizing the feedback provided, assets, trends and themes could be shown. The following pages detail direct feedback given by the community and culminate into the Action Plan detailed in the following chapter.

mapping results

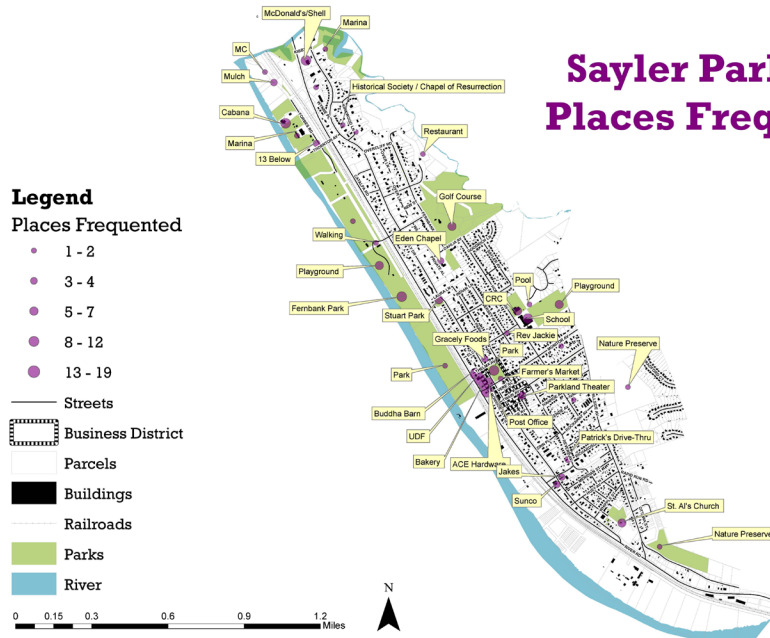
Sayler Park Plan Participants



Starting with strengths and assets, participants identified the very best of Sayler Park by marking places frequented. Listing a variety of neighborhood assets, from outdoor recreation areas to its school, as well as a variety of retail shops and churches, Sayler Park residents value their public amenities, history and small-town character, as can be seen in the map at the bottom of this page.

Also asked were places avoided (not shown). Take away themes included concerns regarding vacancy, blight, pedestrian safety issues, such as unsafe intersections and rocky sidewalks, as well as crime hot spots and unkempt apartments.

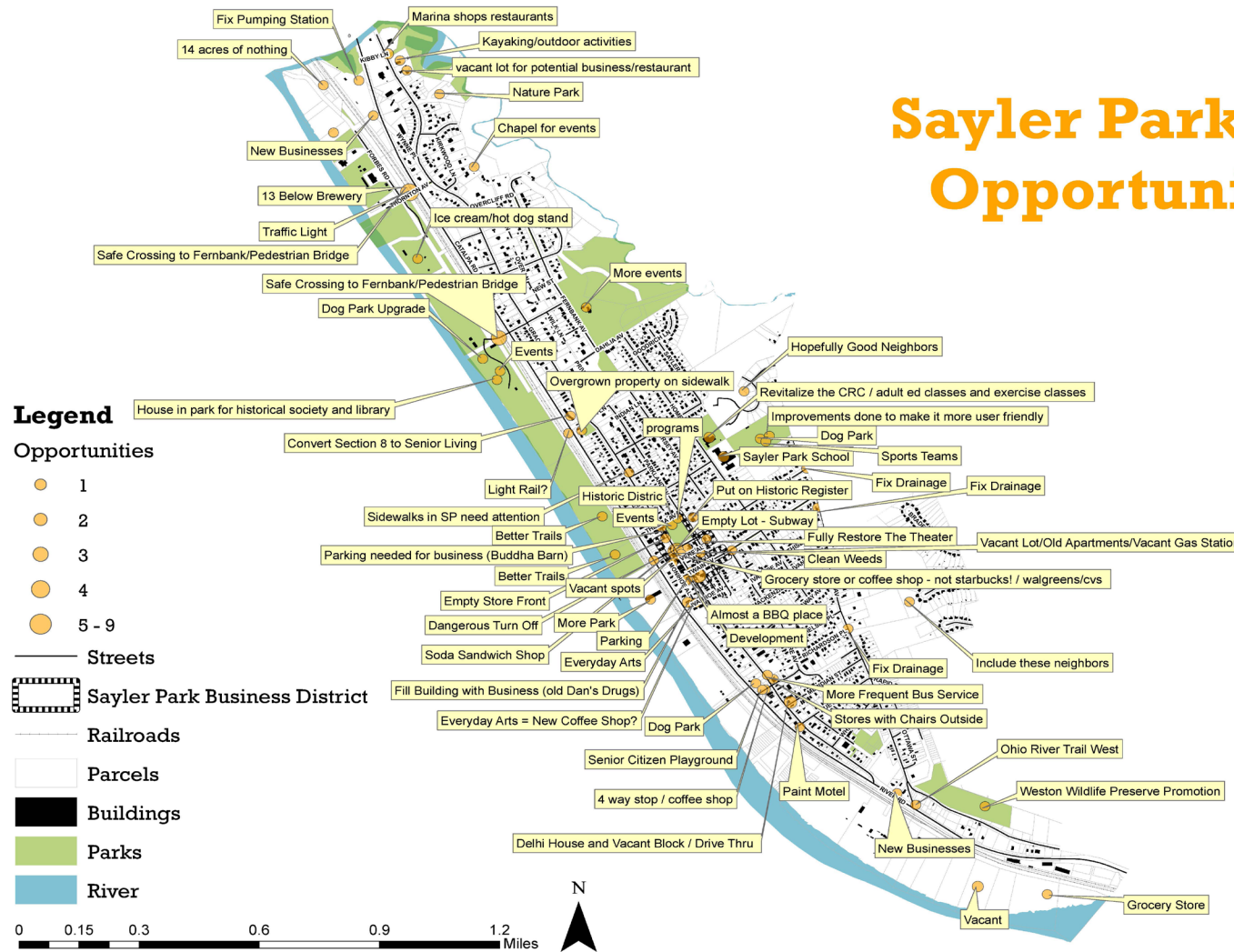
Sayler Park Plan Places Frequented



Finally, residents were asked where they see opportunity for future development in their neighborhood, seen on the map to the right of this page. From pedestrian safety and parking improvements, to more local restaurants and recreation areas, residents have many ideas on how to make Sayler Park a family-friendly destination neighborhood.

mapping results continued...

Sayler Park Plan Opportunities



Utilizing this feedback, common themes and trends were then identified in order to come up with the initiatives, goals and strategies that are the basis for the Sayler Park Plan. The following pages review each initiative in more detail, as well as enumerate goals and strategies identified by the community.

VISION

After digitizing participants' maps and identifying themes and trends, the following eight initiatives were identified by participants:

1. SAYLER PARK CONNECTS: SAYLER PARK STRIVES TO BE AN ACCESSIBLE AND PEDESTRIAN-ORIENTED NEIGHBORHOOD THAT CONNECTS PEOPLE THROUGH A SAFE AND MAINTAINABLE MULTI-MODAL TRANSPORTATION SYSTEM BY EMBRACING INNOVATIVE TECHNOLOGIES AND DESIGNING WITH THE END-USER IN MIND.

2. SAYLER PARK CONSERVES: SAYLER PARK IS A RECOGNIZED LEADER AND AMBASSADOR OF GREEN LIVING FOR THE REGION, WHICH FOSTERS COMMUNITY-DRIVEN STEWARDSHIP THROUGH THE PROMOTION AND IMPLEMENTATION OF EARTH-FIRST PRACTICES.

3. SAYLER PARK GROWS: SAYLER PARK HOSTS A VITAL FAMILY-ORIENTED MARKETPLACE THAT HELPS THE NEIGHBORHOOD THRIVE AND GROW.

4. SAYLER PARK LEARNS: SAYLER PARK IS AN EDUCATED COMMUNITY THAT VALUES LIFE-LONG LEARNING, RESULTING IN EMPOWERED AND ENGAGED CITIZENS THAT INVEST BACK INTO THE COMMUNITY.

5. SAYLER PARK PRESERVES: SAYLER PARK IS A CELEBRATED NEIGHBORHOOD THROUGH THOUGHTFUL PRESERVATION OF ITS RICH ASSETS, ARCHITECTURE AND HISTORY.

6. SAYLER PARK PROMOTES: SAYLER PARK IS A RECOGNIZED NEIGHBORHOOD WITH A COHESIVE COMMUNICATIONS STRATEGY THAT INCORPORATES A STRONG NEIGHBORHOOD BRAND.

7. SAYLER PARK PROVIDES: SAYLER PARK IS A GREAT PLACE TO LIVE FOR ALL AGES.

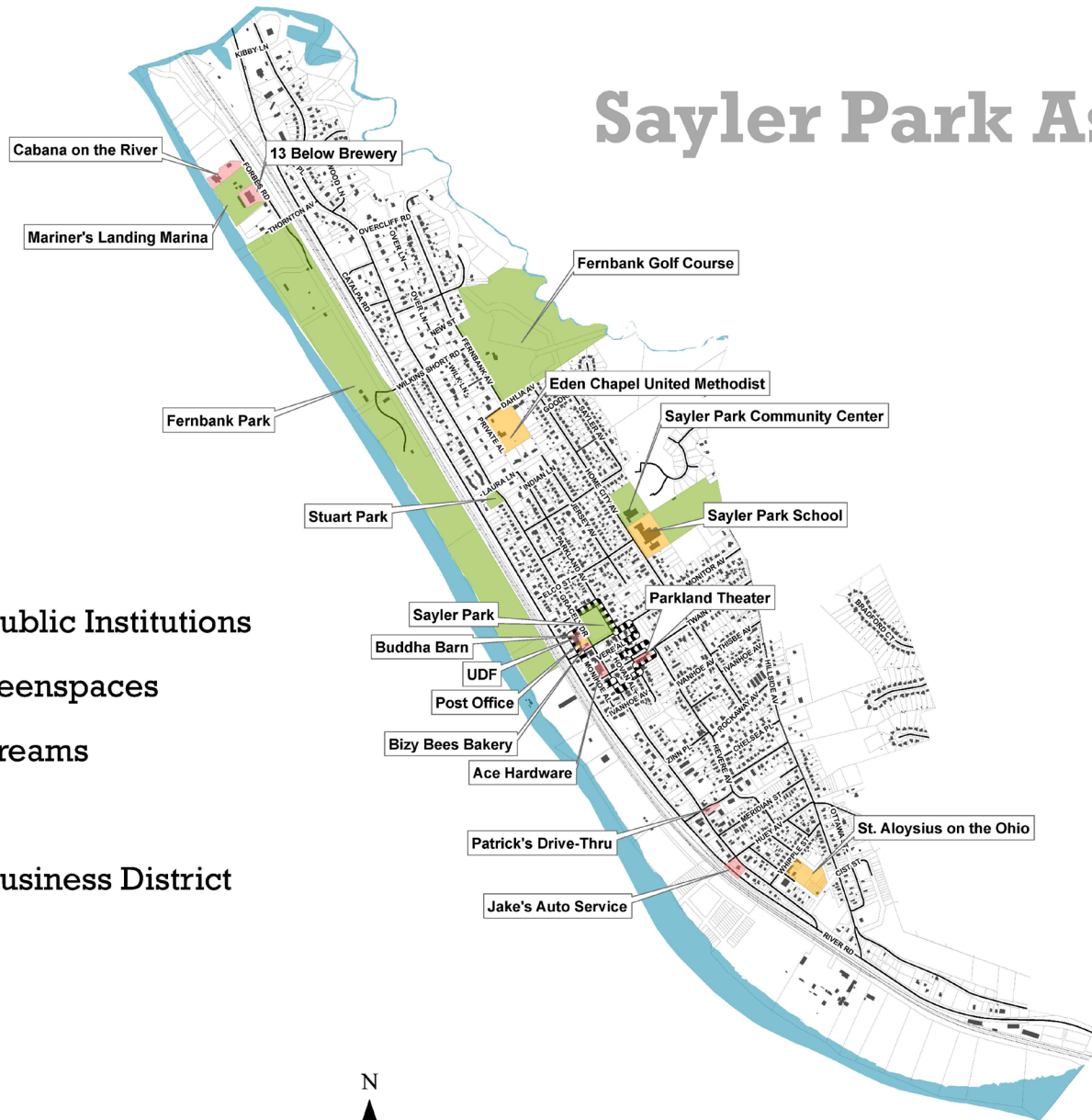
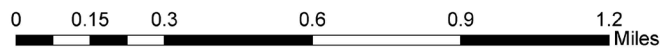
8. SAYLER PARK SECURES: SAYLER PARK IS A SAFE NEIGHBORHOOD WITH PROACTIVE, VIGILANT AND CARING RESIDENTS.

The following pages review each initiative in more detail, as well as enumerate goals, strategies, potential partnerships and resources identified by the community.

Sayler Park Assets Map

Legend

- Businesses
- Religious & Public Institutions
- Parks and Greenspaces
- Rivers and Streams
- Buildings
- Sayler Park Business District
- Parcels
- Streets
- Railroads



SAYLER PARK CONNECTS: TRAFFIC + PEDESTRIAN SAFETY



SAYLER PARK STRIVES TO BE AN ACCESSIBLE AND PEDESTRIAN-ORIENTED NEIGHBORHOOD THAT CONNECTS PEOPLE THROUGH A SAFE AND MAINTAINABLE MULTI-MODAL TRANSPORTATION SYSTEM BY EMBRACING INNOVATIVE TECHNOLOGIES AND DESIGNING WITH THE END-USER IN MIND.



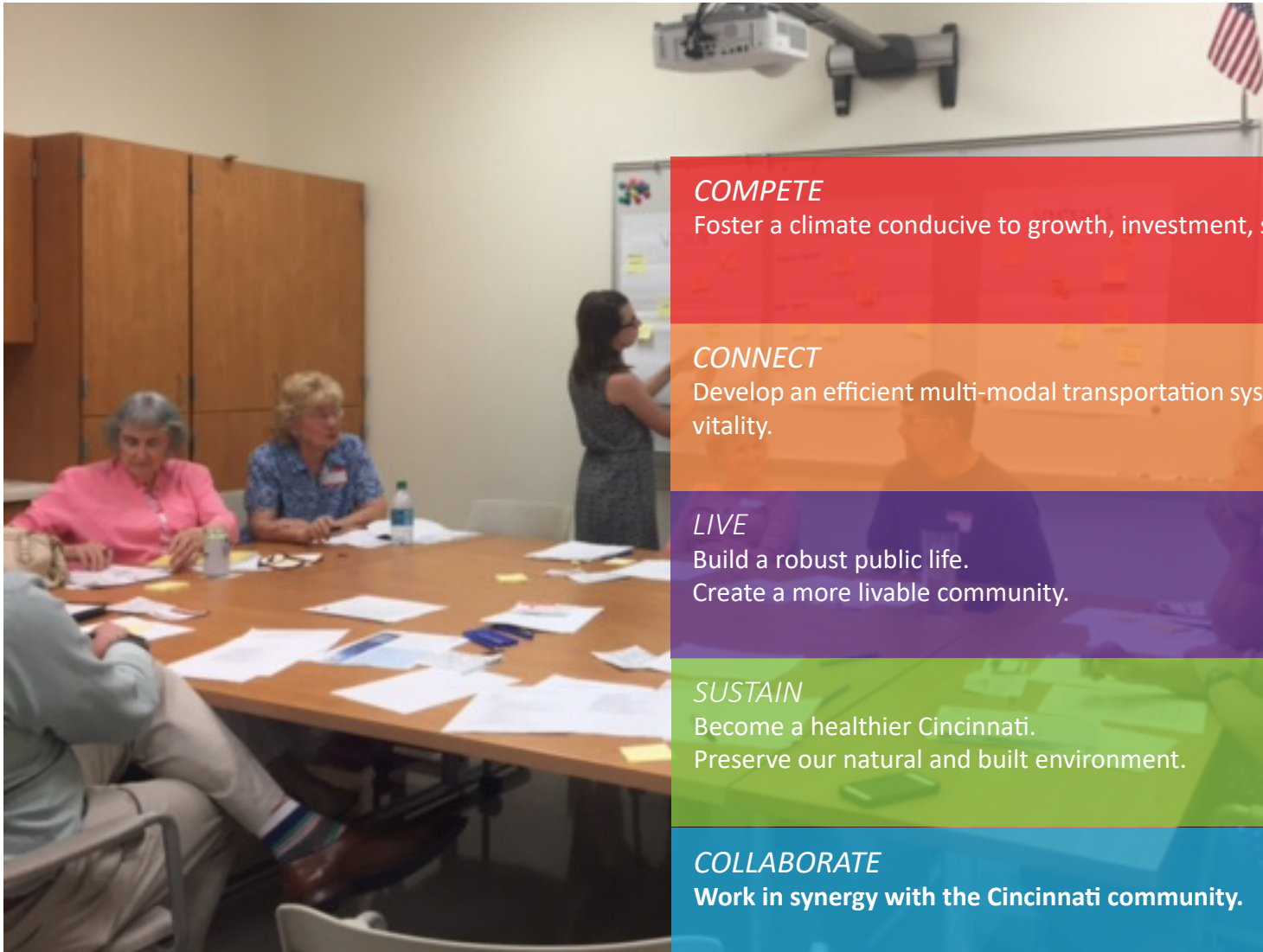
Sayler Park Connects began with the vision to create a neighborhood that strives to be accessible and pedestrian-oriented, connecting people through safe and maintainable methods of transportation that increases quality of life through choice. We embrace innovative technologies designing with the neighborhood consumer in mind. The Sayler Park Transportation + Pedestrian Safety Implementation Team (SP Connects) was formed to realize this goal. SP Connects consists of a group of residents, local leaders and stakeholders, including staff from the City of Cincinnati Department of Transportation and Engineering, that set forth multiple goals as it relates to the connectivity of its streets and safety of its users. SP Connects will be the lead body working to push forward the following goals and strategies, all of which are aligned to the Sayler Park community's feedback during the Sayler Park Plan engagement process.

GOAL 1: DESIGN AND IMPLEMENT A SAFE AND INTEGRATED PEDESTRIAN AND BI-CYCLE NETWORK. Strategies include, but are not limited to: Providing protected and accessible passage to Fernbank Park; Identifying, repairing and maintaining sidewalks and curbs throughout the neighborhood; and, Documenting and prioritizing unsafe traffic patterns. Partnerships for this work should include City of Cincinnati Department of City Planning, City of Cincinnati Department of Traffic and Engineering, City of Cincinnati Parks Board, Hamilton County Parks Department, Ohio River Trail West Working Group and Sayler Park Village Council.

GOAL 2: PROVIDE MORE EFFICIENT AND CONNECTIVE TRANSIT OPTIONS. Strategies include, but are not limited to: Coordinating with the Southwest Ohio Regional Transit Authority to expand bus services to Delhi, Western Hills, and The Mount; and, Exploring opportunities to locate a Park and Ride within the Sayler Park neighborhood. Partnerships for this work should include Cincinnati METRO, City of Cincinnati Department of Transportation and Engineering, The Mount, OKI Regional Council of Governments, Sayler Park Village Council, Southwest Ohio Regional Transit Authority and adjacent neighborhoods, such as Delhi and Western Hills.

GOAL 3: DECREASE THE AMOUNTS OF WEEDS, LITTER, AND BLIGHT ON STREETS AND SIDEWALKS IN THE NEIGHBORHOOD. Strategies include, but are not limited to: Coordinating with the City of Cincinnati's Public Services Department to better control and maintain weed and litter issues on streets and sidewalks; and, Creating and implementing a beautification plan along Route 50. Partnerships for this work should include City of Cincinnati Department of Public Services, City of Cincinnati Parks Board, Hamilton County Parks Department, Sayler Park Village Council and the Sayler Park Village Council Business District Committee.

Other partnerships might include Community Learning Center Institute, CSX, SP Conserves: Green + Public Spaces Implementation Team and Saylor Park Community Learning Center. Potential resources could include City of Cincinnati grants, such as the Congestion, Mitigation and Air Quality Grant and MPO grants, as well as the Fix-it-Cincy mobile app.



COMPETE

Foster a climate conducive to growth, investment, stability, and opportunity.

CONNECT

Develop an efficient multi-modal transportation system that supports neighborhood vitality.

LIVE

Build a robust public life.
Create a more livable community.

SUSTAIN

Become a healthier Cincinnati.
Preserve our natural and built environment.

COLLABORATE

Work in synergy with the Cincinnati community.

SAYLER PARK CONSERVES: GREEN + PUBLIC SPACES



SAYLER PARK IS A RECOGNIZED LEADER AND AMBASSADOR OF GREEN LIVING FOR THE REGION, WHICH FOSTERS COMMUNITY-DRIVEN STEWARDSHIP THROUGH THE PROMOTION AND IMPLEMENTATION OF EARTH-FIRST PRACTICES.



With the vision to create a Sayler Park that is a recognized leader and ambassador of green living for the region, which fosters community-driven stewardship through the promotion and implementation of Earth-first practices, the Sayler Park Conserves: Green + Public Spaces Implementation Team (SP Conserves) was formed. SP Conserves consists of a group of residents, local leaders and stakeholders that set forth multiple goals related to the preservation and sustainability of Sayler Park's green resources. SP Conserves will be the lead body working to push forward the following goals and strategies, all of which are aligned to the Sayler Park community's feedback during the Sayler Park Plan engagement process.

GOAL 1: SUSTAIN AND EXPAND SAYLER PARK'S CURRENT, LOCAL GREEN INITIA-

TIVES: Strategies include, but are not limited to: Promoting and celebrating Sayler Park's green heritage through a coordinated communication strategy; and, Utilizing community experts to train Sayler Park youth and residents to enhance green and public spaces. Partnerships for this work should include Fernbank Garden Club, Paper Street Community Farm, Sayler Park Farmer's Market, Sayler Park Harvest Festival, Sayler Park Promotes Implementation Team, Sayler Park Recreation Center, Sayler Park Community Learning Center, Sayler Park Sustains Festival, Sayler Park Village Council and Western Wildlife Corridor.

GOAL 2: CONSERVE AND ENHANCE SAYLER PARK'S GREEN AND PUBLIC SPACES.

Strategies include, but are not limited to: Preserving the Muddy Creek Corridor; Creating an arborist fund; Utilizing vacant lots to develop green and public space additions; Promoting pedestrian-oriented infrastructure connecting people to green places; and, Advocating for recycling bins in Sayler Park's high-traffic areas. Partnerships for this work should include City of Cincinnati Department of City Planning, City of Cincinnati Department of Public Services, City of Cincinnati Department of Transportation and Engineering, City of Cincinnati Office of Environment and Sustainability, City of Cincinnati Parks Board, Ohio River Trail West Working Group, Sayler Park Connects Implementation Team and Western Wildlife Corridor.

GOAL 3: EDUCATE SAYLER PARK RESIDENTS IN GREEN LIVING PRACTICES.

Strategies include, but are not limited to: Holding informative workshops that teach applicable green living practices; Tagging native trees; Creating and sharing Sayler Park green asset map; and Providing information on green resources to Sayler Park homeowners. Partnerships for this work should include Cincinnati Department of City Planning, City of Cincinnati Parks Board, Sayler Park Village Council and Western Wildlife Corridor.

Other partnerships might include Cincinnati Nature Center, Cincinnati Public Library, Cincinnati Zoo, City of Cincinnati Recreation Commission, Civic Garden Center, Communities United for Action, CSX, Genevieve Trail, Green Umbrella, Hamilton County Development Corporation, Hamilton County Parks Department, Interact for Health, Jubilee Farm, Keep Cincinnati Beautiful, Metropolitan Sewer District, Miami Sierra Club, The Mount, Ohio River Basin Alliance, Ohio River Friends, Our Harvest Cooperative, Red Bike, River Trails West, Sayler Park Business District Committee, Sayler Park Historical Society, Urban Appalachian Community Coalition, Urban Blooms and Western Wildlife Corridor. Potential resources could include EPA Village Green, Green School Certification, Main Street America and Tree City.



SAYLER PARK GROWS: BUSINESS + ECONOMIC DEVELOPMENT



**SAYLER PARK HOSTS A VITAL FAMILY-ORIENTED MARKETPLACE
THAT HELPS THE NEIGHBORHOOD THRIVE AND GROW.**



With the vision to create a Sayler Park that hosts a vital family-friendly marketplace that helps the neighborhood thrive and grow, the Sayler Park Grows: Business + Economic Development Implementation Team (“SP Grows”) was formed. SP Grows consists of a group of residents, business owners and various stakeholders that set forth multiple goals related to the growth and vitality of the neighborhood business environment. SP Grows will be the lead body working to push forward the following goals and strategies, all which align to the Sayler Park community’s feedback during the Sayler Park Plan engagement process.

GOAL 1: TARGET AND ATTRACT SMALL + DESTINATION BUSINESSES TO LOCATE IN SAYLER PARK:

Strategies include, but are not limited to: Encouraging and supporting the addition of local businesses that promote neighborhood self-sufficiency; Evaluating existing on and off-street parking to determine if there is a need for additional parking in the neighborhood business district through a parking study; Rehabilitating aspects of Twain Avenue; Supporting pedestrian and bicycle infrastructure to support new business growth; Conducting a walkability study; and finally, Targeting, stabilizing and cleaning vacant commercial buildings and lots. Partnerships for this work should include City of Cincinnati Department of Community and Economic Development, City of Cincinnati Department of Traffic and Engineering, Sayler Park Secures Implementation Team and Sayler Park Village Council Business District Committee.

GOAL 2: SUPPORT AND RETAIN EXISTING BUSINESSES IN THE COMMUNITY:

Strategies include, but are not limited to: Promoting the business district as distinct and attractive; and Collaborating with the Sayler Park Promotes: Communications +Marketing Implementation Team to promote the neighborhood business district. Partnerships for this work should include Cincinnati Neighborhood Business Districts United, City of Cincinnati Department of Community and Economic Development, Sayler Park Promotes Implementation Team and Sayler Park Village Council Business District Committee.

GOAL 3: ENCOURAGE MORE BUSINESS OWNER ENGAGEMENT AND PARTICIPATION:

Strategies include, but are not limited to: Reviewing the pros and cons of establishing a Sayler Park Business District Association; and, Staying in contact with business owners regarding opportunities for them to be involved in the community and to reach their local customer base. Partnerships for this work should include Sayler Park Promotes Implementation Team and Sayler Park Village Council Business District Committee.

Other partnerships might include Community Learning Center Institute, Hamilton County Development Corporation, Urban Fast Forward and Urban Sites. Potential resources could include various City of Cincinnati funding, such as Neighborhood Business District Support Funds (NBDSF) and Neighborhood Business District Improvement Program (NBDIP) funds, both administered by the Department of Community and Economic Development, as well as the Fix-it-Cincy mobile app.



COMPETE

Foster a climate conducive to growth, investment, stability, and opportunity.

CONNECT

Develop an efficient multi-modal transportation system that supports neighborhood vitality.

LIVE

Build a robust public life.
Create a more livable community.

SUSTAIN

Become a healthier Cincinnati.
Preserve our natural and built environment.

COLLABORATE

Work in synergy with the Cincinnati community.

SAYLER PARK LEARNS: EDUCATION + YOUTH



SAYLER PARK IS AN EDUCATED COMMUNITY THAT VALUES LIFE-LONG LEARNING, RESULTING IN EMPOWERED AND ENGAGED CITIZENS THAT INVEST BACK INTO THE COMMUNITY, UTILIZING THE SAYLER PARK COMMUNITY LEARNING CENTER AS ITS HUB.



With the vision for Saylor Park to be an educated community that values life-long learning, resulting in empowered and engaged citizens that invest back into the neighborhood, utilizing the Saylor Park Community Learning Center as its hub, the Saylor Park Learns: Education + Youth Implementation Team (SP Learns) was formed. SP Learns consists of a group of residents, parents, educators, local leaders and various stakeholders that set forth multiple goals as it relates to students' ability to succeed in the classroom and beyond. SP Learns will be the lead body working to push forward the following goals and strategies, all which align to the Saylor Park community's feedback during the Saylor Park Plan engagement process.

GOAL 1: SAYLER PARK COMMUNITY LEARNING CENTER WILL BE AN OUTSTANDING SCHOOL THAT ATTRACTS YOUNG FAMILIES TO THE NEIGHBORHOOD AND SERVES AS A HUB CONNECTING THE SCHOOL AND THE COMMUNITY.

Strategies include, but are not limited to: Redeveloping Saylor Park's academic program to extend beyond the classroom walls and engage students with experiential learning rooted in the Saylor Park community and aligned to its priorities; Extending Saylor Park Community Learning Center to include high quality early childhood education; Extending Saylor Park Community Learning Center to connect to a quality high school program; Continuing to expand extended day and year-round enrichment for children, parents and community members; and Engaging families and community in promoting Saylor Park to attract new families and reinforce the community learning center as the anchor of a connected, vibrant neighborhood. Partnerships for this work should include Cincinnati Public Schools, Community Learning Center Institute, Saylor Park Community Learning Center and Saylor Park Promotes.

GOAL 2: DEVELOP ROBUST ADULT CONTINUING EDUCATION AND ENRICHMENT PROGRAMMING LEAD BY LOCAL COMMUNITY EXPERTS.

Strategies include, but are not limited to: Engaging community experts to offer evening and weekend classes for adults; and, Hosting community educational, cultural, civic and other events to enrich the quality of life for the neighborhood. Partnerships for this work should include Community Learning Center Institute, Saylor Park Recreation Center, Saylor Park Community Learning Center and Saylor Park Village Council.

Other partnerships might include Beech Acres, Coast Guard, Cincinnati Children's Hospital, Cincinnati Early Learning Center, Cincinnati Library, Cincinnati Zoo, City of Cincinnati, City of Cincinnati Parks Board, City of Cincinnati Recreation Commission, Foundation for Ohio River Education, Hamilton County Redevelopment Authority, INEOS, Mad Cap, Mercy Hospital, The Mount, Osher Life-Long Learning Center, Paper Street Community Farm, Proctor and Gamble, Santa Maria Home Visitation Program, Saylor Park Fernbank Garden Club, Saylor Park Historical Society, Shakespeare in the Park and all SP Plan Implemen-

tation Teams. Potential resources could include 3-PhD, Edutopia, High Tech High, Place Based Learning in Ohio, Vision 2020 and Yellow Springs Project Based Learning.

COMPETE

Foster a climate conducive to growth, investment, stability, and opportunity.

LIVE

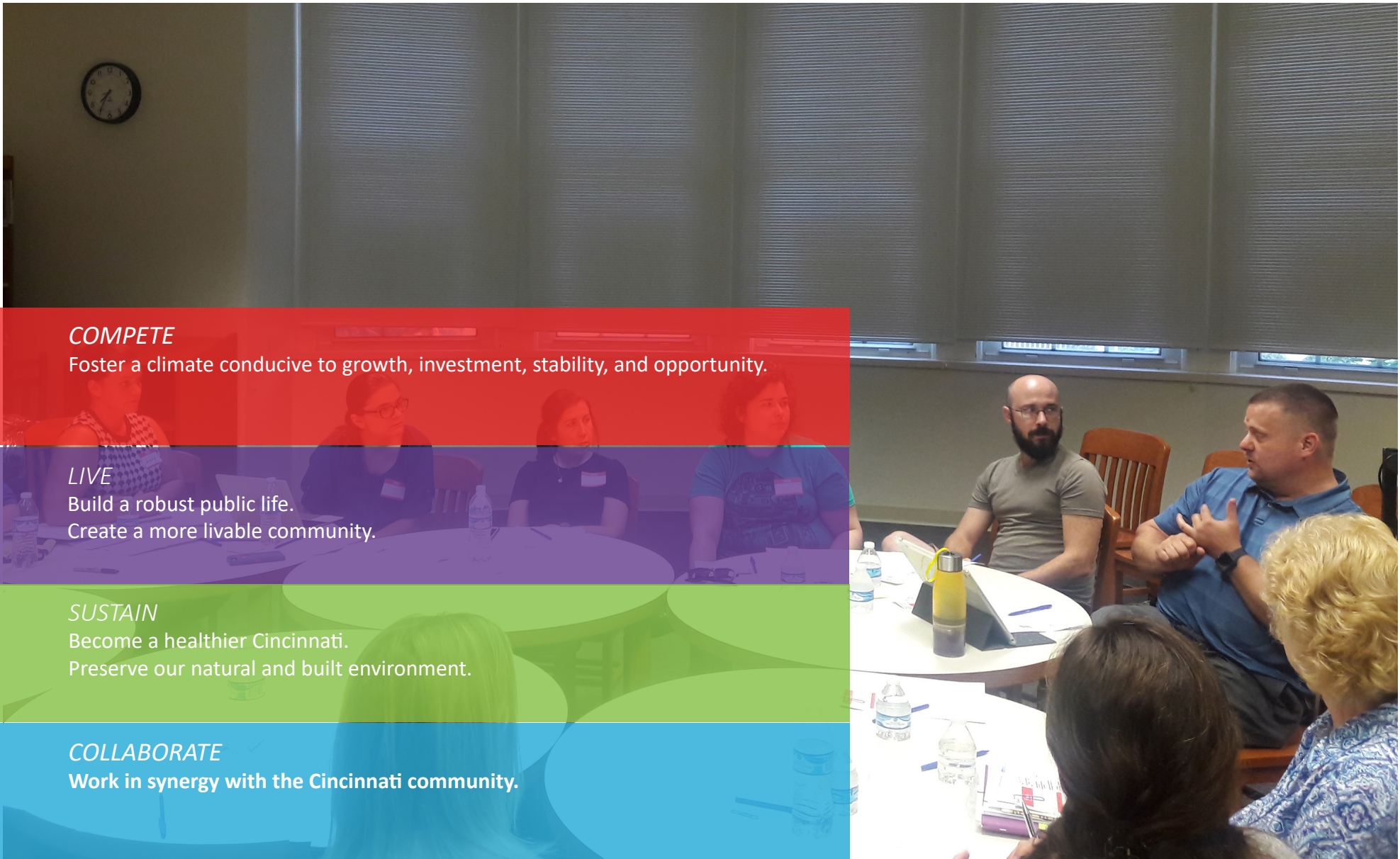
Build a robust public life.
Create a more livable community.

SUSTAIN

Become a healthier Cincinnati.
Preserve our natural and built environment.

COLLABORATE

Work in synergy with the Cincinnati community.



SAYLER PARK PRESERVES: HISTORIC PRESERVATION



SAYLER PARK IS A CELEBRATED NEIGHBORHOOD THROUGH THOUGHTFUL PRESERVATION OF ITS RICH ASSETS, ARCHITECTURE AND HISTORY.



With the vision for Sayler Park to be a celebrated neighborhood through thoughtful preservation of its rich assets, architecture and history, the Sayler Park Preserves: Historic Preservation Implementation Team (SP Preserves) was formed. SP Preserves consists of a group of residents, local experts and various stakeholders that set forth multiple goals as it relates to the preservation of the Sayler Park neighborhood. SP Preserves will be the lead body working to push forward the following goals and strategies, all which align to the Sayler Park community's feedback during the Sayler Park Plan engagement process.

GOAL 1: PRESERVE THE HISTORIC FABRIC OF THE NEIGHBORHOOD. Strategies include, but are not limited to: Coordinating with local experts and various stakeholders to conduct a historical survey in the neighborhood, utilizing past survey efforts; Working with the City of Cincinnati Buildings and Inspections Department's Urban Conservator to nominate eligible individual properties to the national register; Investigate designating a national register historic district for a portion or portions of the Sayler Park neighborhood; and, Promoting infill development. Partnerships for this work should include City of Cincinnati Buildings and Inspections Department, City of Cincinnati Department of City Planning, Sayler Park Grows Implementation Team, Sayler Park Historical Society, Sayler Park Provides Implementation Team, Sayler Park Village Council and Sayler Park Village Council Business District Committee.

GOAL 2: PRESERVE THE HISTORY OF THE NEIGHBORHOOD. Strategies include, but are not limited to: Creating and advertising a walking tour of Sayler Park historic homes using up-to-date technology; Utilizing community experts to preserve history of the Sayler Park neighborhood; and, Installing educational signage to promote historic artifacts in the neighborhood. Partnerships for this work should include City of Cincinnati Department of City Planning, Sayler Park Community Learning Center, Sayler Park Historical Society, Sayler Park Promotes Implementation Team, Sayler Park Provides Implementation Team and Sayler Park Village Council.

Other partnerships might include Cincinnati Preservation Association, The Mount, Ohio History Connection, Ohio Historic Preservation, Partners for Sacred Places, University of Cincinnati and Windshield Tour. Potential resources could include Federal Historic Tax Credits, various City of Cincinnati grants, Historic Homes Plan and State Historic Tax Credits.



PLAN CINCINNATI ALIGNMENT

COMPETE

Foster a climate conducive to growth, investment, stability, and opportunity.

LIVE

Build a robust public life.
Create a more livable community.

SUSTAIN

Become a healthier Cincinnati.
Preserve our natural and built environment.

COLLABORATE

Work in synergy with the Cincinnati community.

SAYLER PARK PROMOTES: COMMUNICATIONS + MARKETING



SAYLER PARK IS A RECOGNIZED NEIGHBORHOOD WITH A COHESIVE COMMUNICATIONS STRATEGY THAT INCORPORATES A STRONG NEIGHBORHOOD BRAND.



With the vision of Sayler Park being a recognized neighborhood with a cohesive communications strategy that incorporates a strong neighborhood brand, the Sayler Park Promotes: Communications + Marketing Implementation Team (“SP Promotes”) was formed. SP Promotes consists of a group of residents, local artists + designers and various stakeholders that set forth goals as it relates to the branding and identity of the neighborhood, all aligned to the Sayler Park community’s feedback during the Sayler Park Plan engagement process. SP Promotes will be the lead body working to push forward the following goals and strategies:

GOAL 1: SAYLER PARK ATTRACTS AND RETAINS FAMILIES THROUGH INCREASED MARKETING AND VISIBILITY. Strategies include, but are not limited to, utilizing community experts to develop a brand that captures Sayler Park’s identity, as well as add appropriate signage in high traffic areas. Partners for this work should include a local creative advisory team, the City of Cincinnati Department of Community and Economic Development, the City of Cincinnati Department of Transportation and Engineering, and the Sayler Park Village Council Business District Committee.

GOAL 2: SAYLER PARK RESIDENTS ARE INFORMED AND ENGAGED IN LOCAL ISSUES AND EVENTS. Strategies include, but are not limited to, appointing a communications director and support team to work under the Sayler Park Village Council, enhancing social media communications, and writing and circulating stories that celebrate and promote Sayler Park to the City of Cincinnati and nearby neighborhoods on a regular basis. Partnerships for this work should include Sayler Park Village Council.

Other partnerships might include Cincinnati Neighborhoods Business Districts United, Community Learning Center Institute and Hamilton County Development Corporation. Potential resources could include various City of Cincinnati funding, such as

Neighborhood Business District Improvement Program (NBDIP) funds administered by the Department of Community and Economic Development, as well as Main Street Grant funds.

COMPETE

Foster a climate conducive to growth, investment, stability, and opportunity.

LIVE

Build a robust public life.
Create a more livable community.

COLLABORATE

Work in synergy with the Cincinnati community.



SAYLER PARK PROVIDES: HOUSING + AGING IN PLACE



SAYLER PARK IS A GREAT PLACE TO LIVE FOR ALL AGES.



With the vision of Sayler Park being a great place to live for all ages, the Sayler Park Provides: Housing + Aging in Place Implementation Team (“SP Provides”) was formed. SP Provides consists of a group of residents and various stakeholders that set forth goals as it relates to increasing the quality of life for all Sayler Park residents. SP Provides will be the lead body working to push forward the following goals and strategies, all of which align to the Sayler Park community’s feedback during the Sayler Park Plan engagement process.

GOAL 1: SAYLER PARK IS ACCESSIBLE. Strategies include, but are not limited to: Identifying inaccessible public spaces and creating a plan to correct; Expanding accessible transportation services, including adding covered bus shelters and more frequent access to downtown; and, Expanding Sayler Park recreation center to include a full service gym facility tailored for all ages. Partnerships for this work should include Cincinnati Recreation Commission, City of Cincinnati Chief Advocacy Officer for Aging and Accessibility, City of Cincinnati Department of Transportation and Engineering, City of Cincinnati Department of City Planning, SP Connects Implementation Team, SP Conserves Implementation Team, SP Grows Implementation Team, Sayler Park Recreation Center, Sayler Park Village Council and Sayler Park Village Council Business District Committee.

GOAL 2: SAYLER PARK PROMOTES AGING-FRIENDLY RESIDENTIAL PROJECTS. Strategies include, but are not limited to: Converting select apartments to senior living; and, Developing efficiency homes. Partnerships for this work should include City of Cincinnati Department of City Planning, City of Cincinnati Department of Community and Economic Development, Sayler Park Secures Implementation Team, Sayler Park senior citizens and Sayler Park Village Council.

GOAL 3: SAYLER PARK EXPANDS HEALTH CARE AND EMERGENCY RELATED SERVICES. Strategies include, but are not limited to: Working with Mercy Health to ensure Sayler Park seniors are utilizing health care services; and, Working with the City of Cincinnati Police Department, particularly District 3, to expand emergency related services in the area, such as welfare checks and brown outs. Partnerships for this work should include City of Cincinnati Fire Department, City of Cincinnati Police Department, Community Learning Center Institute, Mercy School Based Health Center, Sayler Park Community Learning Center, SP Promotes Implementation Team, SP Secures Implementation Team and Sayler Park Village Council.

GOAL 4: SAYLER PARK PROVIDES SUPPORT TO HOMEOWNERS AND SENIOR CITIZENS TO INCREASE QUALITY OF LIFE.

Strategies include, but are not limited to: Utilizing community experts and partners for home improvement projects; Developing a Senior Center with robust programming, resources and continuing education opportunities; and, Developing and implementing a sustainable infrastructure plan with Metropolitan Sewer District. Partnerships for this work should include Cincinnati Recreation Commission, City of Cincinnati, Community Learning Center Institute, Greater Cincinnati Water Works, Hamilton County, Metropolitan Sewer District, Sayler Park Community Learning Center, SP Learns Implementation Team, Sayler Park Recreation Commission and Sayler Park Village Council.

Other partnerships might include Communities United for Action, Habitat for Humanity, People Working Cooperatively, Sun City Homes and various faith-based groups and local tradesmen. Potential resources could include Federal and State Historic Tax Credits, Greater Cincinnati Water Works Enhanced Lead Program, Housing and Urban Development grants, as well as Senior Citizen Center grants.

COMPETE

Foster a climate conducive to growth, investment, stability, and opportunity.

CONNECT

Develop an efficient multi-modal transportation system that supports neighborhood vitality.

LIVE

Build a robust public life.
Create a more livable community.

SUSTAIN

Become a healthier Cincinnati.
Preserve our natural and built environment.

COLLABORATE

Work in synergy with the Cincinnati community.

SAYLER PARK SECURES: SAFETY + NUISANCE ABATEMENT



**SAYLER PARK IS A SAFE NEIGHBORHOOD
WITH PROACTIVE, VIGILANT AND CARING RESIDENTS.**



With the vision of Sayler Park being a safe neighborhood with proactive, vigilant and caring residents, the Sayler Park Secures: Safety + Nuisance Abatement Implementation Team (“SP Secures”) was formed. SP Secures consists of a group of residents, local leaders and stakeholders that set forth goals as it relates to the safety and security of the neighborhood and its residents. SP Secures will be the lead body working to push forward the following goals and strategies, all of which are aligned to the Sayler Park community’s feedback during the Sayler Park Plan engagement process.

GOAL 1: ENSURE THAT PROPERTY AND PERSONAL SAFETY ARE A TOP PRIORITY. Strategies include, but are not limited to: Fostering a positive relationship with the City of Cincinnati Police Department; Partnering with the City of Cincinnati Police Department to create a neighborhood strategy for attacking blight and crime; Encouraging our residents to get involved in Blockwatch and Citizens on Patrol; Installing better lighting and security cameras in the business district and in the community; Coordinating with the City of Cincinnati Fire Department to conduct regular home security inspections; Pro-actively engaging with the City of Cincinnati to address and prioritize property maintenance and crime issues; and Encouraging people make reports regarding public safety and City maintenance issues using the Fix it Cincy App and other reporting resources, such as 513-591-6000 and 513-765-1212. Partners for this work should include Citizens on Patrol, City of Cincinnati Police Department (particularly District 3), City of Cincinnati Fire Department, City of Cincinnati Health Department, City of Cincinnati Law Department, City of Cincinnati Department of Buildings and Inspections, City of Cincinnati Public Services Department, Sayler Park Village Council, Sayler Park Village Council Business District Committee and The Port.

GOAL 2: FOSTER AN ENVIRONMENT WHERE COMMUNITY VOICES CAN BE HEARD AND PARTICIPATION IN NEIGHBORHOOD SAFETY, PROPERTY MAINTENANCE AND CLEANUP IS ENCOURAGED. Strategies include, but are not limited to: Developing and implementing a plan wherein Sayler Park Village Council actively promotes property maintenance, requests voluntary cleanup and compliance with nuisance regulations by property owners, and offers to arrange cleanup assistance to owner occupants when requested, appropriate and available; Providing content for a welcome packet to new citizens with non-emergency phone numbers, Fix-it-Cincy information and social media pages to access important City and community information; and Creates and maintains on-line communication tools in coordination with Sayler Park Village Council. Partners for this work should include Citizens on Patrol, City of Cincinnati Department of Buildings and Inspections, City of Cincinnati Police Department (particularly District 3), City of Cincinnati Fire Department, City of Cincinnati Health Department, City of Cincinnati Law Department, City of Cincinnati Parks Department, City of Cincinnati Public Services Department, Sayler Park Village Council, and The Port.

Other partnerships might include Sayler Park Recreation Center and Sayler Park Community Learning Center. Potential resources could include various City of Cincinnati funding, such as facade improvement grants.



PLAN CINCINNATI ALIGNMENT

COMPETE

Foster a climate conducive to growth, investment, stability, and opportunity.

LIVE

Build a robust public life.
Create a more livable community.

SUSTAIN

Become a healthier Cincinnati.
Preserve our natural and built environment.

COLLABORATE

Work in synergy with the Cincinnati community.

NEIGHBORHOOD PRIORITIES & TIME LINE

SAYLER PARK CONNECTS: TRAFFIC + PEDESTRIAN SAFETY

Initiative	Goals	Strategies in Order of Priority	Potential Partners	Timeline
SP Connects: Traffic + Pedestrian Safety	Design and implement a safe and integrated pedestrian and bicycle network.	Identifying, repairing and maintaining sidewalks and curbs throughout the neighborhood.	City of Cincinnati Department of City Planning, City of Cincinnati Department of Traffic and Engineering, City of Cincinnati Parks Board, Hamilton County Parks Department, Ohio River Trail West Working Group and Sayler Park Village Council.	Mid Term (3 - 5 Years)
		Documenting and prioritizing unsafe traffic patterns.		
		Providing protected and accessible passage to Fernbank Park.		
	Provide more efficient and connective transit options.	Coordinating with the Southwest Ohio Regional Transit Authority to expand bus services to Delhi, Western Hills and The Mount.	Cincinnati METRO, City of Cincinnati Department of Transportation and Engineering, The Mount, OKI Regional Council of Governments, Sayler Park Village Council, Southwest Ohio Regional Transit Authority and adjacent neighborhoods, such as Delhi and Western Hills.	Long Term (5 - 10 Years)
		Exploring opportunities to locate a park and ride within the Sayler Park neighborhood.		
	Decrease the amounts of weeds, litter and blight on streets and sidewalks in the neighborhood.	Coordinating with the City of Cincinnati's Department of Public Services to better control and maintain weed and litter issues on streets and sidewalks.	City of Cincinnati Department of Public Services, City of Cincinnati Parks Board, Hamilton County Parks Department, Sayler Park Village Council and the Sayler Park Village Council Business District Committee.	Mid Term (3 - 5 Years)
Creating and implementing a beautification plan along Route 50.				

SAYLER PARK CONSERVES: GREEN + PUBLIC SPACES

Initiative	Goals	Strategies in Order of Priority	Potential Partners	Timeline
SP Conserves: Green + Public Spaces	Conserve and enhance Sayler Park's green and public spaces.	Promoting and celebrating Sayler Park's green heritage through a coordinated communication strategy.	City of Cincinnati Department of City Planning, City of Cincinnati Department of Public Services, City of Cincinnati Department of Transportation and Engineering, City of Cincinnati Office of Environment and Sustainability, City of Cincinnati Parks Board, Ohio River Trail West Working Group, Sayler Park Connects Implementation Team and Western Wildlife Corridor.	Short Term (1 - 3 Years)
		Utilizing community experts to train Sayler Park youth and residents to enhance green and public spaces.		
	Sustain and expand Sayler Park's current local green initiatives.	Preserving the Muddy Creek Corridor.	Fernbank Garden Club, Paper Street Community Farm, Sayler Park Farmer's Market, Sayler Park Harvest Festival, Sayler Park Promotes Implementation Team, Sayler Park Recreation Center, Sayler Park Community Learning Center, Sayler Park Sustains Festival, Sayler Park Village Council and Western Wildlife Corridor.	Mid Term (3 - 5 Years)
		Creating an arborist fund.		
		Utilizing vacant lots to develop green and public space additions.		
		Promoting pedestrian-oriented infrastructure connecting people to green places.		
	Educate Sayler Park residents in green living practices.	Advocating for recycling bins in Sayler Park's high traffic areas.	Cincinnati Department of City Planning, City of Cincinnati Parks Board, Sayler Park Village Council and Western Wildlife Corridor.	Mid Term (3 - 5 Years)
		Holding information workshops that teach applicable green living practices.		
		Tagging native trees.		
		Creating and sharing Sayler Park green asset map.		
		Providing information on green resources to Sayler Park homeowners.		

SAYLER PARK GROWS: BUSINESS + ECONOMIC DEVELOPMENT

Initiative	Goals	Strategies in Order of Priority	Potential Partners	Timeline
SP Grows: Business + Economic Development	Targeting and attracting small destination businesses to locate in Sayler Park.	Encouraging and supporting the addition of local businesses that promote neighborhood self-sufficiency.	City of Cincinnati Department of Community and Economic Development, City of Cincinnati Department of Traffic and Engineering, Sayler Park Secures Implementation Team and Sayler Park Village Council Business District Committee.	Mid Term (3 - 5 Years)
		Rehabilitating aspects of Twain Avenue.		
		Supporting pedestrian and bicycle infrastructure to support new business growth.		
		Conducting a walkability study.		
		Targeting, stabilizing and cleaning vacant commercial buildings and lots.		
	Evaluating existing on and off street parking to determine if there is a need for additional parking in the neighborhood business district.			
	Supporting and retaining existing businesses in the community.	Promoting the business district as distinct and attractive.	Cincinnati Neighborhood Business Districts United, City of Cincinnati Department of Community and Economic Development, Sayler Park Promotes Implementation Team and Sayler Park Village Council Business District Committee.	Mid Term (3 - 5 Years)
		Collaborating with the Sayler Park Promotes: Communications + Marketing Implementation Team to strategize the promotion of the neighborhood business district.		
	Encouraging more business owner engagement and participation.	Reviewing the pros and cons of establishing a Sayler Park Business District Association.	Sayler Park Promotes Implementation Team and Sayler Park Village Council Business District Committee.	Mid Term (3 - 5 Years)
Staying in contact with business owners regarding opportunities for them to be involved in the community and to reach their local customer base.				

SAYLER PARK LEARNS: EDUCATION + YOUTH

Initiative	Goals	Strategies in Order of Priority	Potential Partners	Timeline
SP Learns: Youth + Education	Sayer Park Community Learning Center will be an outstanding school that attracts young families to the neighborhood and serves as a hub connecting the school and community.	Redeveloping Sayer Park's academic program to extend beyond the classroom walls and engage students with experiential learning rooted in the Sayer Park community and aligned to its priorities.	Cincinnati Public Schools, Community Learning Center Institute, Sayer Park Community Learning Center and Sayer Park Promotes.	Mid Term (3 - 5 Years)
		Extending Sayer Park Community Learning Center to include high quality early childhood education.		
		Extending Sayer Park Community Learning center to connect to a quality high school program.		
		Engaging families and community in promoting Sayer Park to attract new families and reinforce the community learning center as the anchor of a connected, vibrant neighborhood.		
		Continuing to expand extended day and year round enrichment for children, parents and community members.		
	Developing robust adult continuing education and enrichment programming lead by local community experts.	Engaging community experts to offer evening and weekend classes for adults.	Community Learning Center Institute, Sayer Park Recreation Center, Sayer Park Community Learning Center and Sayer Park Village Council.	Short Term (1 - 3 Years)
		Hosting community educational, cultural, civic and other events to enrich the quality of life for the neighborhood.		

SAYLER PARK PRESERVES: HISTORIC PRESERVATION

Initiative	Goals	Strategies in Order of Priority	Potential Partners	Timeline
SP Preserves: Historic Preservation	Preserving the historic fabric of the neighborhood.	Coordinating with local experts and various stakeholders to conduct a historical survey in the neighborhood, utilizing past survey efforts.	City of Cincinnati Buildings and Inspections Department, City of Cincinnati Department of City Planning, Sayler Park Grows Implementation Team, Sayler Park Historical Society, Sayler Park Provides Implementation Team, Sayler Park Village Council and Sayler Park Village Council Business District Committee.	Mid Term (3 - 5 Years)
		Promoting rehabilitation and new construction that aligns to the historic nature of the neighborhood.		
		Investigate designating a national register historic district for a portion or portions of the Sayler Park neighborhood.		
		Working with the City of Cincinnati Buildings and Inspections Department's Urban Conservator to nominate eligible individual properties to the national register.		
	Preserving the history of the neighborhood.	Utilizing community experts to preserve history of the Sayler Park neighborhood.	City of Cincinnati Department of City Planning, Sayler Park Community Learning Center, Sayler Park Historical Society, Sayler Park Promotes Implementation Team, Sayler Park Provides Implementation Team and Sayler Park Village Council.	Mid Term (3 - 5 Years)
		Creating and advertising a walking tour of Sayler Park historic homes, using up-to-date technology.		
Installing educational signage to promote historic artifacts in the neighborhood.				

SAYLER PARK PROMOTES: COMMUNICATIONS + MARKETING

Initiative	Goals	Strategies in Order of Priority	Potential Partners	Timeline
SP Promotes: Communications + Marketing	Sayler Park attracts and retains families through increased marketing and visibility.	Add appropriate signage in high traffic areas.	City of Cincinnati Department of Community and Economic Development, the City of Cincinnati Department of Transportation and Engineering, Local Creative Advisory Team and the Sayler Park Village Council Business District Committee.	Short Term (1 - 3 Years)
	Sayler Park residents are informed and engaged in local issues and events.	Utilizing community experts to develop a brand that captures Sayler Park's identity.		
		Appointing a communications director and support team to work u under the Sayler Park Village Council.		
		Enhancing social media communications. Writing and circulating stories that celebrate and promote Sayler Park to the City of Cincinnati and nearby neighborhoods on a regular basis.		

SAYLER PARK PROVIDES: HOUSING + AGING IN PLACE

Initiative	Goals	Strategies in Order of Priority	Potential Partners	Timeline
SP Provides: Housing + Aging in Place	Sayler Park is accessible.	Identifying inaccessible public spaces and creating a plan to correct.	Cincinnati Recreation Commission, City of Cincinnati Chief Advocacy Officer for Aging and Accessibility, City of Cincinnati Department of Transportation and Engineering, City of Cincinnati Department of City Planning, SP Connects Implementation Team, SP Conserves Implementation Team, SP Grows Implementation Team, Sayler Park Recreation Center, Sayler Park Village Council and Sayler Park Village Council Business District Committee.	Long Term (5 - 10 Year)
		Expanding accessible transportation services, including adding covered bus shelters and more frequent access to downtown.		
		Expanding Sayler Park Recreation Center to include a full service gym facility tailored for all ages.		
	Sayler Park provides support to homeowners and senior citizens to increase quality of life.	Utilizing community experts and partners for home improvement projects.	Cincinnati Recreation Commission, City of Cincinnati, Community Learning Center Institute, Greater Cincinnati Water Works, Hamilton County, Metropolitan Sewer District, Sayler Park Community Learning Center, SP Learns Implementation Team, Sayler Park Recreation Commission and Sayler Park Village Council.	Long Term (5 - 10 Year)
		Developing and implementing a sustainable infrastructure plan with metropolitan sewer district.		
		Developing a senior center with robust programming, resources and continuing education opportunities.		
	Sayler Park promotes aging-friendly residential projects.	Developing efficiency homes.	City of Cincinnati Department of City Planning, City of Cincinnati Department of Community and Economic Development, Sayler Park Secures Implementation Team, Sayler Park senior citizens and Sayler Park Village Council.	Long Term (5 - 10 Year)
		Converting select apartments to senior living.		
	Sayler Park expands health care and emergency related services.	Working with Mercy Health to ensure Sayler Park seniors are utilizing health care services.	City of Cincinnati Fire Department, City of Cincinnati Police Department, Community Learning Center Institute, Mercy School Based Health Center, Sayler Park Community Learning Center, SP Promotes Implementation Team, SP Secures Implementation Team and Sayler Park Village Council.	Short Term (1 - 3 Years)
		Working with the City of Cincinnati, particularly District 3 Police Department, to expand emergency related services in the area, such as welfare checks and brown outs.		

SAYLER PARK SECURES: SAFETY + NUISANCE ABATEMENT

Initiative	Goals	Strategies in Order of Priority	Potential Partners	Timeline
<p>SP Secures: Safety + Nuisance Abatement</p>	<p>Ensure that property and personal safety are a top priority.</p>	<p>Fostering a positive relationship with the City of Cincinnati Police Department.</p>	<p>Citizens on Patrol, City of Cincinnati Police Department (particularly District 3), City of Cincinnati Fire Department, City of Cincinnati Health Department, City of Cincinnati Law Department, City of Cincinnati Department of Buildings and Inspections, City of Cincinnati Public Services Department, Sayler Park Village Council, Sayler Park Village Council Business District Committee and The Port.</p>	<p>Mid Term (3 - 5 Years)</p>
		<p>Partnering with the City of Cincinnati Police Department to create a neighborhood strategy for attacking blight and crime.</p>		
		<p>Encouraging our residents to get involved in block watch and citizens on patrol.</p>		
		<p>Installing better lighting and security cameras in the business district and in the community.</p>		
		<p>Coordinating with the City of Cincinnati Fire Department to conduct regular home safety inspections.</p>		
		<p>Encouraging people to make reports regarding public safety and city maintenance issues using the Fix-it-Cincy app and other reporting resources, such as 513-591-6000 and 513-765-1212.</p>		
		<p>Proactively engaging with the City of Cincinnati to address and prioritize property maintenance and crime issues.</p>		
	<p>Foster an environment where community voices can be heard and participation in neighborhoods safety, property maintenance and cleanup is encouraged.</p>	<p>Developing and implementing a plan wherein Sayler Park Village Council actively promotes property maintenance, requests voluntary cleanup and compliance with nuisance regulations by property owners and offers to arrange cleanup assistance to owner occupants when requested, appropriate and available.</p>	<p>Citizens on Patrol, City of Cincinnati Department of Buildings and Inspections, City of Cincinnati Police Department (particularly District 3), City of Cincinnati Fire Department, City of Cincinnati Health Department, City of Cincinnati Law Department, City of Cincinnati Parks Department, City of Cincinnati Public Services Department, Sayler Park Village Council, and The Port.</p>	<p>Short Term (1 - 3 Years)</p>
		<p>Providing content for a welcome packet to new citizens with non-emergency phone numbers, Fix-it-Cincy information and social media pages to access important City and community information.</p>		
		<p>Creating and maintaining online communication tools in coordination with Sayler Park Village Council.</p>		

NEXT STEPS

The Sayler Park Plan expresses the vision and goals of the Sayler Park community and provides prioritized strategies to ensure Sayler Park will continue to be an attractive, premier riverfront neighborhood for years to come. This Plan has been embraced by residents and stakeholders alike, as several successful projects have already been implemented. From pedestrian safety and neighborhood identity, to additional preschool classrooms and small-scale local retail development, this Plan works to enhance an already great neighborhood.

Coordination and communication must be sustained in order for this Plan to continue its success. Implementation teams based off of initiatives will work to keep the momentum for this process moving forward, under the guidance of several neighborhood and City stakeholders, including the Sayler Park Plan Steering Committee and its representatives. Furthermore, potential partners, funders and developers must continue to be identified as the Plan moves forward.

The neighborhood of Sayler Park is a true gem. With a highly engaged body of residents, multiple organizations already doing great work, interested investors and seemingly infinite assets, the community is poised to become one of the most desirable neighborhoods throughout the City of Cincinnati and beyond.

COMMUNITY ENGAGEMENT EXERCISE

Sayler Park

community visioning exercise guide

Activity # 1: Visioning Questionnaire

0

For This Activity You Will Need:
Materials: Visioning Questionnaire and Pens for each participant, Black Marker Recorder

1 20 MIN

Questionnaire

Pass out the visioning questionnaire and pens to each participant. Participants will get 7-10 minutes to answer the 3 questions individually. Once each participant has had sufficient time to answer the questions, open up for discussion and review comments. The recorder will then write down common themes on the chart sheet with the black marker. Themes will be shared by group at the end of the meeting. Collect all questionnaires when finished.

Activity # 2: Community Plan Mapping Exercise

0

For This Activity You Will Need:
Materials: Maps, Stickers, Pens, Green Marker, Red Marker and Blue Marker Recorder Presenter

1 map #1 5 MIN

Participants

where you live | work | own property

With the **ORANGE** stickers, mark on the map where each participant lives, works, and/or owns property in the neighborhood. It's okay to mark multiple locations.

2 map #2 10 MIN

Places Frequented

where do you go often?

With the **GREEN** stickers, mark on the map places you frequent in Sayler Park. It's encouraged to mark multiple locations. Feel free to draw a line from the sticker and write a note regarding why you placed a sticker at that location. When all locations are marked, please note the top 3 places frequented according to the group on the chart sheet with the green marker.

3 map #3 10 MIN

Places Avoid

where do you feel unsafe?

With the **RED** stickers, mark on the map places you avoid in Sayler Park. It's encouraged to mark multiple locations. Feel free to draw a line from the sticker and write a note regarding why you placed a sticker at that location. When all locations are marked, please note the top 3 places avoided according to the group on the chart sheet with the red marker.

4 map #3 10 MIN

Opportunities

where do you feel there is potential?

With the **BLUE** stickers, mark on the map places you feel have potential in Sayler Park. It's encouraged to mark multiple locations. Feel free to draw a line from the sticker and write a note regarding why you placed a sticker at that location. When all locations are marked, please note the top 3 opportunities according to the group on the chart sheet with the blue marker.

/ 20 MIN

Present

share results

Each group will have 2-3 minutes to present their questionnaire and mapping results to the rest of the attendees. Choose one person who will present.

Thank You!

SAYLER PARK PLAN INITIATIVE 1-PAGERS

SAYLER PARK PLAN

SP Connects: Transportation + Pedestrian Safety



VISION: Sayler Park strives to be an accessible and pedestrian-oriented neighborhood that connects people through a safe and maintainable multi-modal transportation system by embracing innovative technologies and designing with the end-user in mind.

Goal 1: Design and implement a safe and integrated pedestrian and bicycle network.

Strategies:

1. Provide protected and accessible passage to Fernbank Park
2. Repair and maintain sidewalks and curbs throughout the neighborhood
3. Document and prioritize unsafe traffic patterns

Next Steps:

- Conduct a feasibility study, preliminary engineering, and determine funding for making a safe, pedestrian-oriented connection to Fernbank Park
- Determine specific sidewalk maintenance and repair locations
- Work with the Department of Transportation and Engineering on a Sayler Park Pedestrian Safety Survey
- Educate residents on how to report "near misses" (pedestrian/car accidents) to the City of Cincinnati using the Fix It Cincy App

Goal 2: Provide more efficient and connective transit options.

Strategies:

1. Coordinate with the Southwest Ohio Regional Transit Authority to expand bus services to Delhi, Western Hills, and Mt. St. Joe
2. Explore opportunities to locate a Park and Ride within the Sayler Park neighborhood

Next Steps:

- Connect the Sayler Park Village Council Transportation Committee to appropriate City / County Staff
- Conduct a feasibility study, preliminary engineering and determine funding for a Park and Ride in the Sayler Park neighborhood

Goal 3: Decrease the amounts of weeds, litter, and blight on streets and sidewalks in the neighborhood.

Strategies:

1. Coordinate with the City of Cincinnati's Public Services Department to better control and maintain weed and litter issues on streets and sidewalks
2. Implement a beautification program along Route 50

Next Steps:

- Connect with Cincinnati Parks Board to create a beautification plan along Route 50
- Educate residents on how to report blight to the City of Cincinnati using the Fix It Cincy App and other resources

Potential Partners:

- City of Cincinnati Parks Department
- City of Cincinnati Department of City Planning
- Community Learning Center Institute
- Department of Transportation and Engineering
- Hamilton County Parks Department
- METRO
- Ohio River Trail West Working Group
- OKI Regional Council of Governments
- Railroad Companies
- Sayler Park Business District Committee
- Sayler Park School
- Sayler Park Village Council
- Sayler Park Village Council Transportation Team
- Southwest Ohio Regional Transit Authority

Potential Resources:

- MPO Grants
- Congestion, Mitigation and Air Quality Grant

SAYLER PARK PLAN

SP Conserves: Green + Public Spaces



VISION: Sayler Park is a recognized leader and ambassador of green living for the region which fosters community-driven stewardship through the promotion and implementation of Earth-friendly practices.

Goal 1: Sustain and expand Sayler Park's current, local green initiatives.

Strategies:

1. Expand Fernbank Garden Club membership through sustained outreach to ensure longevity
2. Promote and celebrate Sayler Park's green heritage through a coordinated communication strategy with Sayler Park Village Council, the City of Cincinnati, and nearby neighborhood efforts, such as: Sayler Park Harvest Festival, Sayler Park Sustains Festival, Sayler Park Farmer's Market, Fernbank Garden Club, Winding Walks (city's largest LEED-certified area), Paper Street Farm, Parkland Homestead Farm, and Western Wildlife Corridor

3. Procure "Tree City USA" signage

Next Steps:

- Create outreach plan for Fernbank Garden Club
- Identify willing community experts
- Connect with the Communications and Marketing Implementation Team and Sayler Park Village Council to strategize the promotion of green initiatives
- Contact appropriate City officials for "Tree City USA" signage
- Create calendar for action items

Goal 2: Conserve and enhance Sayler Park's green and public spaces.

Strategies:

1. Preserve the Muddy Creek Corridor
2. Create an arborist fund
3. Utilize vacant lots to develop green and public space additions
4. Promote human-scaled infrastructure connecting people to green places, e.g. bike lanes in and to the business district, safe pedestrian and bike access to Fernbank Park (possible locations: Wilkins Short, Monitor, Thorton's Triangle), wheelchair accessibility in green and public spaces

5. Advocate for recycling bins in Sayler Park's high-traffic areas

Next Steps:

- Work with the City of Cincinnati to create a Sayler Park vacant properties and public ownership map
- Identify conservation partner(s)
- Work with the City of Cincinnati's Public Services Department to identify process acquiring neighborhood recycling bins
- Work with Department of Transportation and Engineering and the Traffic and Pedestrian Safety Implementation Team to identify barriers in accessing green and public spaces, such as Fernbank Park and Muddy Creek Corridor
- Research potential funding opportunities

Goal 3: Educate Sayler Park residents in green living best practices.

Strategies:

1. Hold informative workshops that teach applicable green living practices
2. Tag native trees
3. Create and share Sayler Park green asset map
4. Partner with existing Sayler Park groups to communicate these opportunities for the neighborhood

Next Steps:

- Identify local experts and community partners to hold workshops
- Work with the Cincinnati Park Board and Urban Forestry Department to understand tree-tagging process
- Identify neighborhood's green resources
- Work with local schools

Potential Partners:

Building Value
Carriage House Farm
CORV
Cincinnati Get Outdoors Weekend
Cincinnati Nature Center
Cincinnati Recreation Commission
Cincinnati State
Cincinnati Zoo
Cincinnati Public Library
City of Cincinnati
City of Cincinnati Dept. of Environment and Sustainability
City of Cincinnati Dept. of Public Services
City of Cincinnati Parks Board
City of Cincinnati Urban Forestry
CSX
Communities United for Action (CUFA)
Civic Garden Center
Dept. of Transportation and Engineering
Fernbank Garden Club
Genevieve Trail
Green Umbrella
Growing Value
Hamilton Co. Development Authority
Hamilton Co. Environmental Services
Hamilton Co. Extension Service
Hamilton Co. Parks
Interact for Health
Imago
Jubilee Farm
Keep Cincinnati Beautiful
Metropolitan Sewer District
Miami Sierra Club
Mount St. Joseph University
Ohio River Basin Alliance
Ohio River Friends
River Trails West
River West
Sayler Park Business District
Sayler Park Farmer's Market
Sayler Park Harvest Festival
Sayler Park Historical Society
Sayler Park School
Sayler Park Sustains
TriState Trails
Urban Appalachian Community Coalition
Urban Blooms
University of Cincinnati
Western Wildlife Corridor
Xavier University Sustainability Program

Potential Resources:

Main Street America
Tree City

SAYLER PARK PLAN

SP Grows: Business + Economic Development



VISION: Sayler Park is a vital and thriving neighborhood that experiences growth through a family-oriented market place.

Goal 1: Target and attract small and/or destination businesses to locate in Sayler Park.

Strategies:

1. Encourage and support the addition of local businesses that promote neighborhood self-sufficiency
2. Evaluate existing on and off-street parking to determine if there is a need for additional parking in the business district
3. Rehabilitate road and pedestrian/bike infrastructure to support new business growth
4. Target, stabilize and clean up vacant commercial buildings and lots

Next Steps:

- Work with the Department of Transportation and Engineering to study existing on and off-street parking use during peak hours and make a plan based on results
- Work with the Department of Transportation and Engineering to conduct a walkability study in the business district
- Research City of Cincinnati funding opportunities available for business district beautification

Goal 2: Support and retain existing businesses in the community.

Strategies:

1. Promote the neighborhood business district as distinct and attractive
2. Explore the viability of a business district shuttle
3. Work with business owners and community stakeholders to organize community clean-up campaigns focused in the business district

Next Steps:

- Connect with the Communications + Marketing Implementation Team to strategize the promotion of the neighborhood business district(s)
- Work with the Sayler Park Business District Committee to organize regular community clean-ups
- Educate business owners on how to utilize the "Fix-it-Cincy" app to report blight, litter and crime

Goal 3: Encourage more business owner engagement and participation.

Strategies:

1. Create a Sayler Park Business District Association

Next Steps:

- Recruit neighborhood business owners for the Sayler Park Business District Committee

Potential Partners:

Cincinnati Nbh Business Districts United
 City of Cincinnati
 Community Learning Center Institute
 Depart of Community & Economic Dev
 Hamilton County Dev Corporation
 Urban Fast Forward
 Urban Sites

Potential Resources:

DCED Grants
 DOTE Grants
 Fix-it-Cincy
 NBDSF Funds
 NBDIP Funds

SAYLER PARK PLAN

SP Learns: Education + Youth



VISION: Sayler Park is an educated community that values life-long learning, resulting in empowered and engaged citizens that invest back into the community, utilizing the Sayler Park Community Learning Center as its hub.

Goal 1: Sayler Park Community Learning Center will be an outstanding school that attracts young families to the neighborhood and serves as a vibrant hub connecting the school and the community.

Strategies:

1. Redevelop Sayler Park School's academic program to extend beyond the classroom walls and engage students with experiential learning rooted in the Sayler Park community and aligned to its priorities— from history and the natural environment, to commerce and the economy.

- Develop plan for CPS Vision 2020 proposal and secure funding from CPS for planning revamped rigorous, high quality curriculum.

- Extend Sayler Park Community Learning Center to include high quality early childhood education.

- Extend Sayler Park Community Learning Center to connect to a quality high school program.

- Continue to expand extended day and year-round enrichment for children (Science/Tech/Engineering/Arts/Math/Book/Sports/Film/Language Clubs, Drop-in-Play, NBH Youth Council, Summer Internships, SP School newsletter, Adopt-a-Class, Community Days, Health and Wellness Education, etc.).

- Offer programs and other opportunities for parents to be engaged in their children's education.

- Collaborate with The Mount to provide education services in and outside of the classroom (professional development, fieldwork, tutoring, etc.).

2. Engage families and community in promoting Sayler Park to attract new families and reinforce the community learning center as the anchor of a connected, vibrant neighborhood.

- CLC signage, wayfinding and marketing.

Next Steps:

- Complete community engagement and research to guide the selection of a new academic program for the CPS Vision 2020 application.

- Secure funding to enable teachers, parents, and community members in the Education and Youth Implementation Team to visit exemplars of the model chosen for Sayler Park.

- Pursue potential partners for early childhood program and high school options.

Goal 2: Develop robust adult continuing education and enrichment programming lead by local community experts.

Strategies:

1. Engage community experts to offer evening and weekend classes for adults (Book/Genealogy/Cooking Clubs, The Mount College Advisory, GED, Computer Programming, Internet Café, Health and Wellness Education, etc.).

2. Host community educational, cultural, civic, social and other events to enrich the quality of life for the neighborhood.

Next Steps:

- Complete inventory of community programming and identify local experts.

- Continue engagement process to identify what is of interest to community, including segments of the demographic (e.g. retired, parents of young children, etc.).

- Seek partnerships to manage and provide programming.

Potential Partners:

Coast Guard
Cincinnati Children's Hospital
Cincinnati Early Learning Center
Cincinnati Library
Cincinnati Parks Board
Cincinnati Public School
Cincinnati Zoo
City of Cincinnati
Community Learning Center Institute
Foundation for Ohio River Education
Hamilton County Redevelopment Authority
INEOS
Mad Cap
Mercy Hospital
The Mount
Osher Life-Long Learning Center
Paper Street Farm
Proctor and Gamble
Santa Maria Home Visitation Program
Sayler Park Cincinnati Recreation Commission
Sayler Park Fernbank Garden Club
Sayler Park Historical Society
Sayler Park School
Sayler Park Sustains
Shakespeare in the Park

Potential Resources:

CAN: 3-PhD
Edutopia
High Tech High
Place Based Learning Ohio
Vision 2020
Yellow Springs Project Based Learning

SAYLER PARK PLAN

SP Preserves: Historic Preservation



VISION: Sayler Park is a celebrated neighborhood through thoughtful preservation of its rich assets, architecture and history.

Goal 1: Preserve the historic fabric of the neighborhood.

Strategies:

1. Coordinate with local universities to conduct a historical survey in the neighborhood.
2. Work with the City of Cincinnati to nominate eligible individual properties to the national register
3. Investigate designating a national register historic district for a portion or portions of the Sayler Park neighborhood
4. Promote infill development.

Next Steps:

- Educate community on benefits of Historic District designation.
- Review zoning and related tools with the City of Cincinnati Planning Department to ensure the preservation of the historic nature of the neighborhood.
- Research potential partners and applicable resources for best practices and future funding opportunities.

Goal 2: Preserve the history of the neighborhood.

Strategies:

1. Create and advertise a walking tour of Sayler Park historic homes using updated technology tools, such as an app.
2. Utilize community experts to preserve history of the Sayler Park neighborhood.
3. Install educational signage to promote historic artifacts in the neighborhood.

Next Steps:

- Coordinate communication efforts of Sayler Park Historical Society with Sayler Park Village Council.
- Organize a walking tour of Sayler park historic homes.
- Connect Sayler Park Historical Society with Sayler Park School to provide educational opportunities to youth.
- Digitize all Sayler Park historical documents.

Potential Partners:

Cincinnati Preservation Association
City of Cincinnati
City of Cincinnati Urban Conservator
The Mount
Ohio Historic Preservation
Partners for Sacred Places
Sayler Park Historic Society
University of Cincinnati
Windshield Tour

Potential Resources:

Federal Historic Tax Credits
Grants
Historic Homes Plan
State Historic Tax Credits

SAYLER PARK PLAN

SP Promotes: Communications + Marketing



VISION: Sayler Park is a recognized neighborhood with a cohesive communications strategy that incorporates a strong neighborhood brand.

Goal 1: Sayler Park attracts and retains families through increased marketing and visibility.

Strategies:

1. Utilize community experts to develop a brand that captures Sayler Park's identity.
2. Add appropriate signage in high traffic areas.

Next Steps:

- Assemble a creative advisory team.
- Work with the Department of Community and Economic Development to identify funding for a neighborhood branding project.

Goal 2: Sayler Park residents are informed and engaged in local issues and events.

Strategies:

1. Appoint a Communications Director and supporting team to work under the Sayler Park Village Council.
2. Enhance social media communications.
3. Create and circulate a neighborhood print newsletter on an ongoing basis.
4. Write and circulate stories that celebrate and promote Sayler Park to the City of Cincinnati and nearby neighborhoods on an ongoing basis.

Next Steps:

- Work with Sayler Park Village Council to create a Communications Director and supporting team.

Potential Partners:

Cincinnati Nbh Business Districts United
 City of Cincinnati
 Community Learning Center Institute
 Dept. of Community and Economic Dev.
 Department of Traffic and Engineering
 Hamilton County Development Corporation
 Sayler Park Village Council
 SPVC Business District Committee

Potential Resources:

Dept. of Community and Economic Dev. Grants
 Department of Traffic and Engineering Grants
 Main Street Grants
 NBDIP Funds
 Sayler Park Village Council Social Media

SAYLER PARK PLAN

SP Provides: Housing + Aging in Place



VISION: Sayler Park is a great place to live for all ages.

Goal 1: Sayler Park is accessible.

Strategies:

1. Identify inaccessible public spaces and create plan to correct
2. Expand accessible transportation services

Next Steps:

- Neighborhood tour with the City of Cincinnati Chief Advocacy Officer for Aging and Accessibility on October 20th.

Goal 2: Sayler Park promotes aging-friendly residential projects.

Strategies:

1. Convert select apartments to senior living
2. Develop efficiency homes

Next Steps:

- Survey Sayler Park seniors to better understand housing needs and demands

Goal 3: Sayler Park expands health care and emergency related services.

Strategies:

1. Work with Mercy Health to ensure Sayler Park seniors are utilizing health care services
2. Work with D3 and Fire Department to expand emergency related services in the area

Next Steps:

- Meet with Mercy Health, D3 and Fire Department

Goal 4: Sayler Park provides support to homeowners and senior citizens to increase quality of life.

Strategies:

1. Utilize community experts and partners for home improvement projects
2. Develop a Senior Center with robust programming, resources and continuing education opportunities
3. Develop and implement a sustainable infrastructure plan with MSD

Next Steps:

- Make a list of community experts
- Research Senior Center funding
- Meet with Hamilton Cty Commissioner

Potential Partners:

Officer for Aging and Accessibility
Cincinnati Fire Department
City of Cincinnati
Communities United for Action
Dept. of Community and Economic Dev.
Department of Transportation and Engineering
District 3 Police
Faith-Based Groups
Greater Cincinnati Water Works
Habitat for Humanity
Hamilton County
Local Tradesman
Mercy School Based Health Center
Metropolitan Sewer District
People Working Cooperatively
Sun City Homes

Potential Resources:

Enhanced Lead Program
Senior Citizen Center Grants
Housing and Urban Development

SAYLER PARK PLAN

SP Secures: Safety + Nuisance Abatement



VISION: Sayler Park is a safe neighborhood with proactive, vigilant and caring residents.

Goal 1: Ensure that property and personal safety are a top priority.

Strategies:

1. Encourage people to file complaints regarding property maintenance
2. Foster a positive relationship with District 3 and the Fire Department
3. Partner with District 3 in order to create a neighborhood strategy for attacking blight and crime
4. Install better lighting and security cameras in the business district
5. Coordinate with the City of Cincinnati Fire Department to conduct regular home security inspections
6. Pro-actively engage with the City of Cincinnati to address and prioritize property maintenance and crime issues

Next Steps:

- Create a Sayler Park Safety Committee under Sayler Park Village Council that consists of residents, business owners, community stakeholders, District 3 and the Fire Department
- Educate Sayler Park residents on how to utilize the "Fix it Cincy" App and other reporting resources
- Obtain a vacant property map from the City of Cincinnati

Goal 2: Foster an environment where community voices can be heard and participation in neighborhood safety, property maintenance, and cleanup is encouraged.

Strategies:

1. Conduct safety related campaigns in the community (i.e. lead paint testing and awareness, fire inspection awareness).
2. Develop and implement a plan wherein Village Council actively promotes property maintenance, requests voluntary cleanup and compliance with nuisance regulations by property owners, and offers to arrange cleanup assistance when requested, appropriate, and available. Slogan: "Sayler Park is a Neat Place to Live"
3. Provide a welcome pack to new citizens with non-emergency phone numbers, Fix-It-Cincy information and social media pages to access important City and community information
4. Create and maintain online communications tools and coordinate with Sayler Park Village Council

Next Steps:

- Coordinate safety campaigns with District 3 and the Fire Department
- Sayler Park Safety Committee to create welcome packets and social media presence

Potential Partners:

Citizens on Patrol
 District 3 Police
 Cincinnati Fire Department
 Cincinnati Health Department
 Cincinnati Law Department
 Department of Buildings & Inspections
 Department of Public Services
 Hamilton County Development Authority
 Sayler Park Cincinnati Recreation Center
 Sayler Park School
 Sayler Park Village Council

Potential Resources:

Fix it Cincy Mobile App
 City of Cincinnati Façade Improvement Grants

SP CONSERVES GREEN RESOURCE MATERIALS: TREE CANOPY MAPS

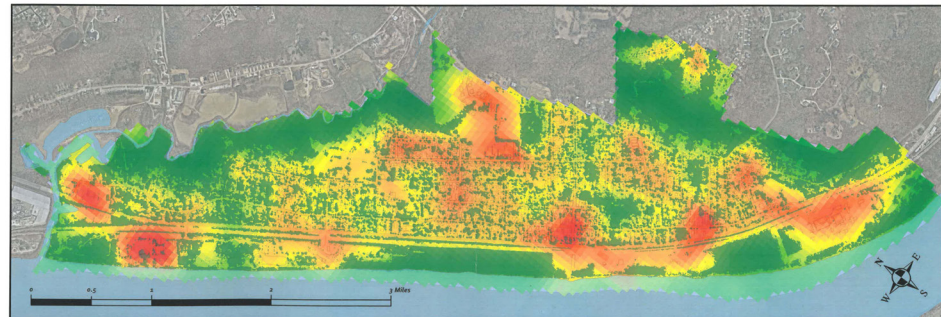
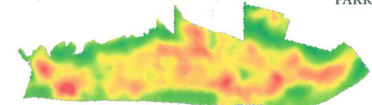


Sayer Park Tree Canopy and Land Surface Temperature (July 17, 2019)

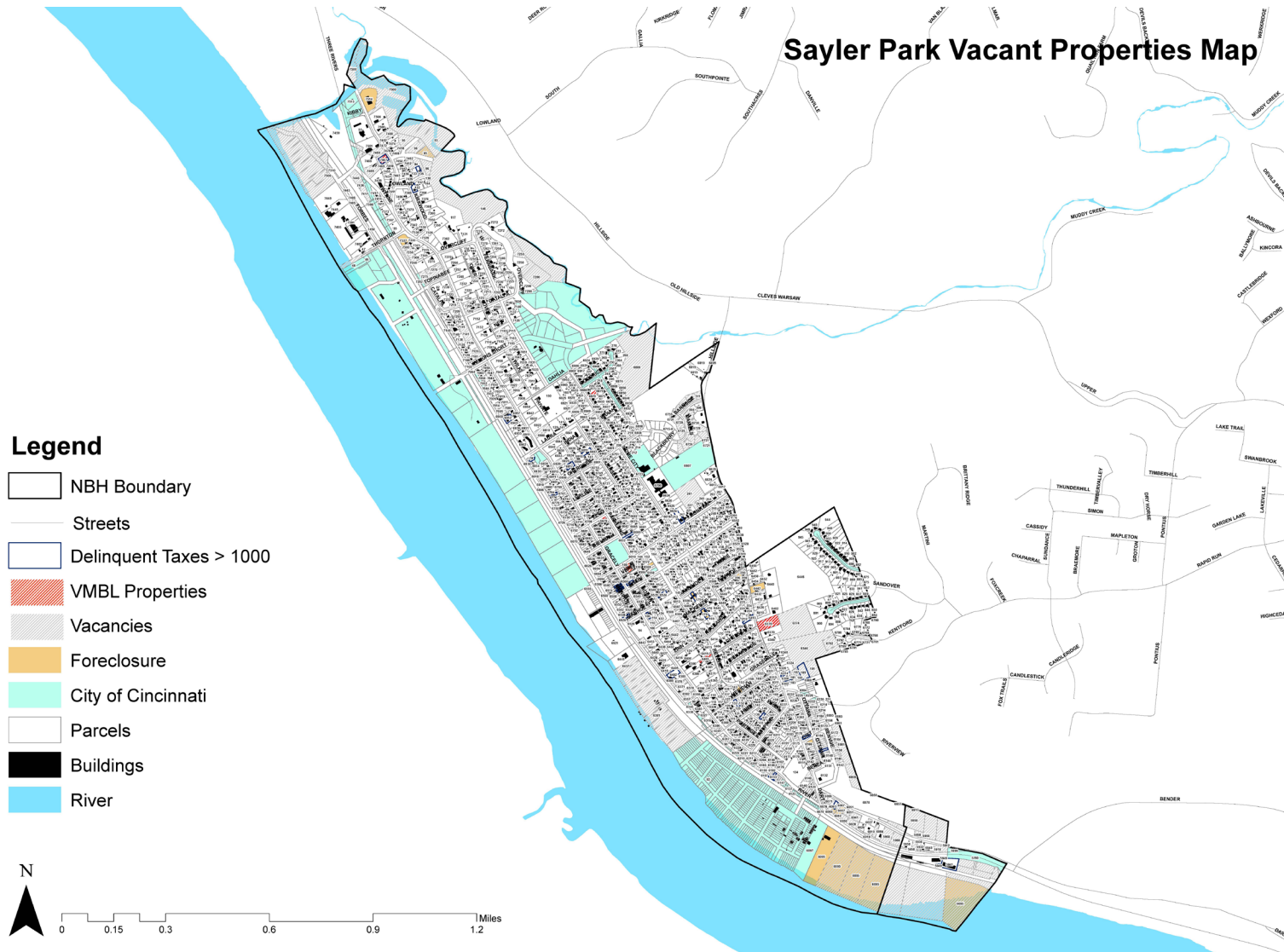
Land Surface Temp - July 7th 2017

Value
High : 76
Low : 64

- Sayer Park Tree Canopy
- Sayer_Pavement
- Sayer_Buildings
- Sayer_Sidewalks
- Sayer_Park
- River



SP SECURES VACANT PROPERTIES MAP



SP HILLSIDE RECREATION FIELDS PROPOSAL



SAYLER PARK HILLSIDE RECREATION FIELDS
PROPOSAL FOR COMMUNITY UTILIZATION

2020

Area of Opportunity

The Sayler Park Rec Center and Sayler Park School sit at the heart of our community. Through the process of writing and approving our Neighborhood Plan with Adelyn Hall of the Community Learning Center Institute, Sayler Park Village Council, its Board Members, and our residents have expressed interest in expanding recreation opportunities and food access in the neighborhood. We have identified the Sayler Park Hillside Recreation Fields as an area of opportunity toward fulfillment of these goals.

Over the last year, our community Food Mapping project facilitated by Dr. Alan Wright of the University of Cincinnati gathered feedback from residents about creating greater resiliency in our neighborhood's food production. A community orchard was identified as an avenue to reach this goal that has broad neighborhood support.

Our proposed project includes 2 phases:

Phase 1: Small front yard community orchard located at Sayler Park School (already funded by Giving Trees and in partnership with Sayler Park School)

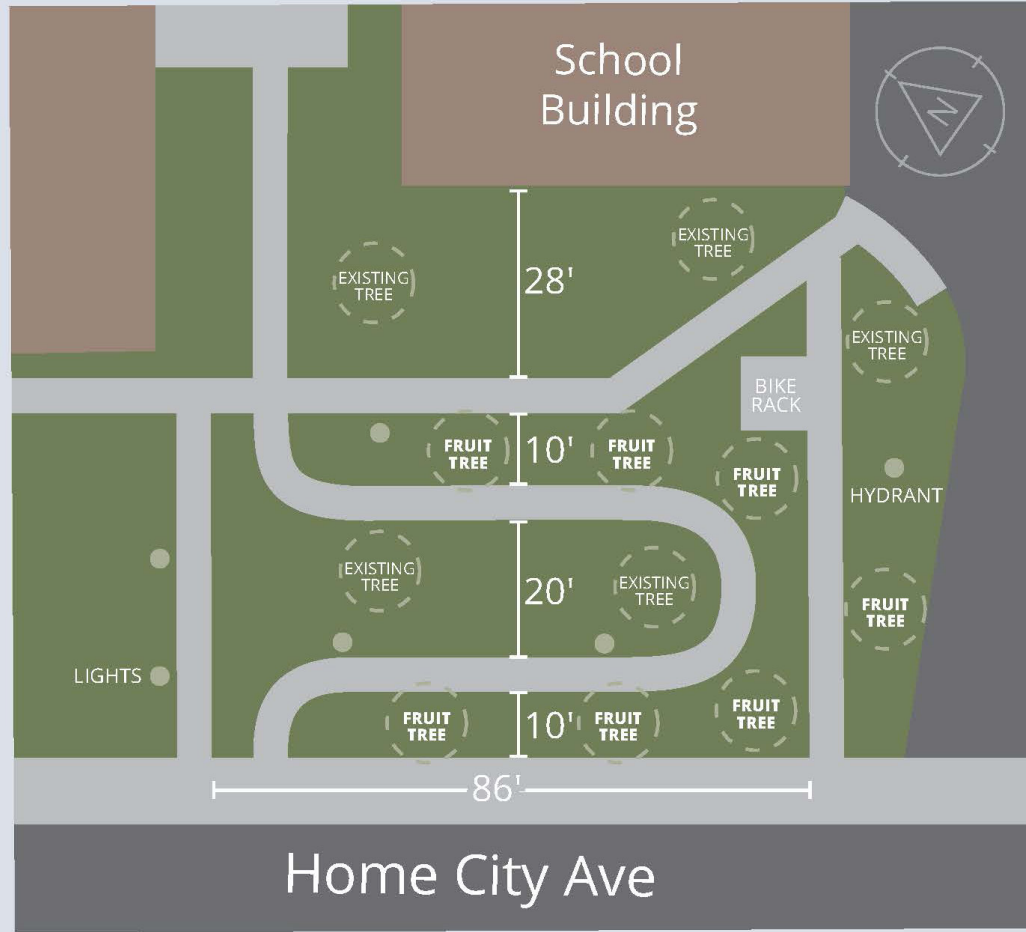
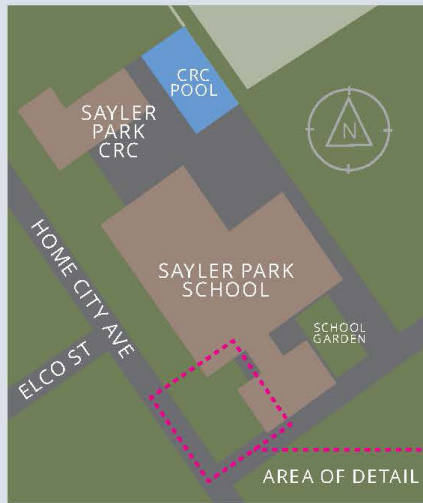
Phase 2: Reimagining the large CRC fields behind the School into a mixed-use recreation area including a walking path, larger community orchard, picnic spots, pickleball courts, and open areas for outdoor recreation. This project would be in partnership with Cincinnati Recreation Commission and is the subject of this CBR request.

**Sayler Park School, 6700 Home City Avenue
Proposed Phase 1 Community Orchard Site**

**NOT PART OF CBR REQUEST
BUT ADJACENT AND RELEVANT**

Phase 1 of the Community Orchard Project:

- Install several fruit bearing trees in the front yard of Sayler Park School
- We have a teacher and classroom committed to adopting the trees as part of their Project Based Learning curriculum.
- Funding has already been secured from Giving Trees, as a culmination of our work with Alan Wright in a Sayler Park Food Map
- Phase 1 project to foster interest, fundraising, and PR opportunities for the larger Phase 2 project



Sayler Park Hillside Athletic Fields Proposed Phase 2: Community Utilization through CBR Request

Phase 2:

- Aiming for more complete utilization of dormant Sayler Park Hillside Athletic Fields, located at 6607 Hillside Avenue
- Aligns to Community requests in the Sayler Park Plan to conserve and enhance Sayler Park's green and public spaces.
- Opportunity could include:
 - Walk/run path
 - Community Orchard interplanted with native hardwood trees
 - Areas for picnicking
 - Rehabilitation of concession stand to utilize restrooms and equipment storage for orchard care
 - Pickleball courts
 - Space for outdoors fitness classes ex: yoga, dance, aerobics, boot camp, senior exercise
- Existing advantages:
 - Playground
 - Parking lot
 - Perimeter fencing
 - Proximity to the heart of the community
 - Well connected road access
 - Nighttime lighting
 - Unused building with electric, plumbing (unused concession stand)



Note: In the past, this area was utilized for youth soccer and baseball. Youth sports in Sayler Park are still an area of opportunity, but with the nationwide decline in youth sport participation, we are seeking greater community utilization of this space. Sayler Park has 3 baseball fields in addition to those highlighted in the 'area of opportunity'.

Sayler Park Hillside Athletic Fields Proposed Phase 2: Community Utilization through CBR Request



Sayler Park Hillside Athletic Fields Proposed Phase 2: Community Utilization through CBR Request



Walking path lined with fruit and native hardwood trees enhances our pedestrian friendly neighborhood and offers opportunity for outdoor recreation



Community education on tree care



Opportunity for outdoors fitness classes



Pickleball courts to attract players from the neighborhood and around the city. Enhances the indoors pickleball program currently hosted at our CRC



Tree ID tags include QR codes that link to digital content created by Sayler Park School classes as part of their Project Based Learning



Neighborhood gathering place and picnic grounds



'Adopt a tree' program for fundraising and tree care

Sayler Park Hillside Athletic Fields
Proposed Phase 2: Community Utilization through CBR Request
Addendum: Current images

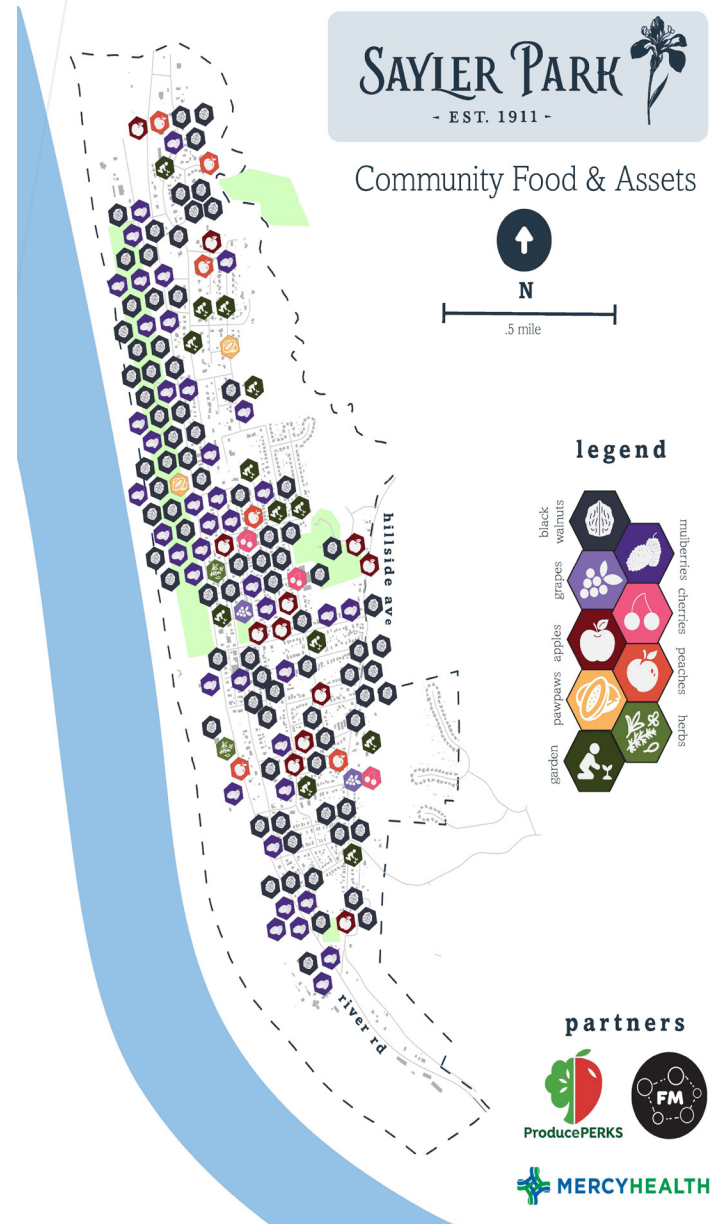
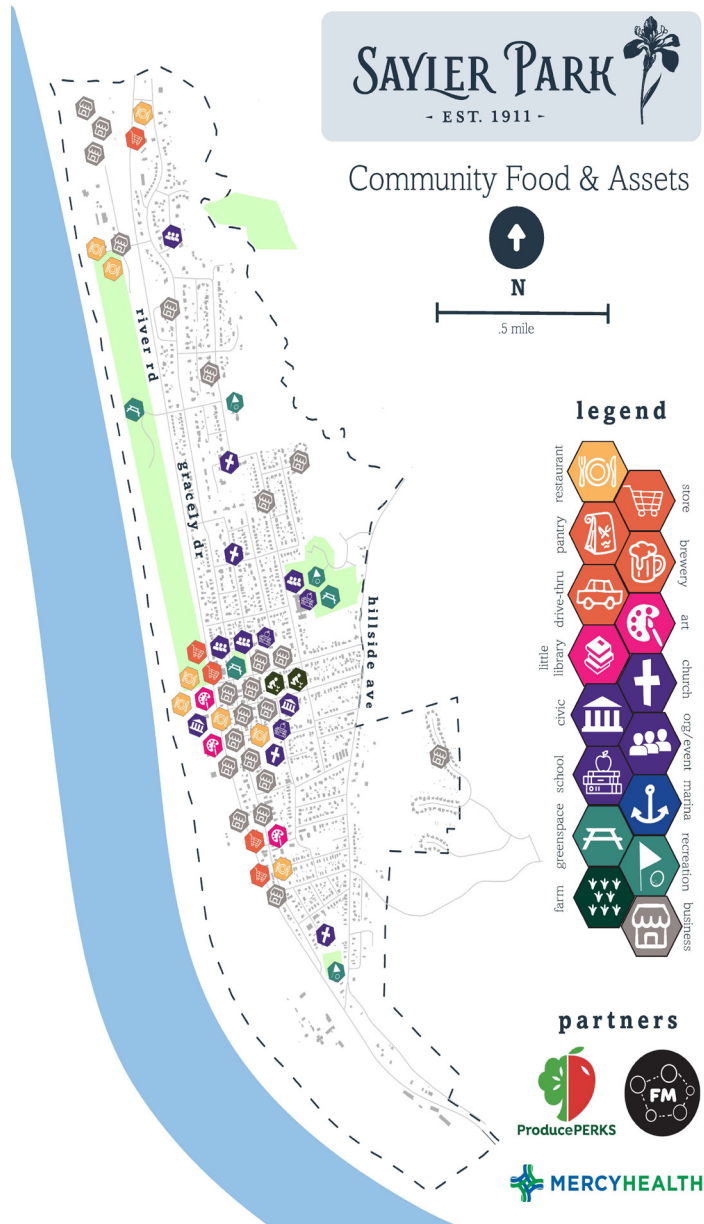


View from Hillside Ave, Sayler Park School is at the far end of the field



Satellite View

SP COMMUNITY FOOD & ASSETS



SP

